



Guidetti s.r.l.

Spare parts catalogue



Mini Stone crusher



Guidetti s.r.l

© Global Plant Ltd

MODEL	MF 450
SERIAL NUMBER N°	
DATED	11 Giugno 2003



Guidetti s.r.l.

INTRODUCTION

This catalogue has been projected to be a guide for the order of spare parts and has been realized for a quick identification of the parts that constitute the mini stone crusher. Instructions, drawings, tables and all the other contents of this catalogue are technical and confidential.

For this reason no data or information may be reproduced neither entirely nor partially without written authorization from GUIDETTI Srl.

GUIDETTI Srl represents the sole owner and reserves all rights to modify the catalogue without prior warning.

© Global Plant Ltd



Guidetti s.r.l.

ORDERING PROCEDURE

Follow the indications described in order to facilitate the ordering of spare parts.

Always specify:

- Model, serial number and year of construction of the machine;
- Number of the plate to which the part refers to;
- Code of the part and denomination;
- Quantity of spare parts requested.

GUIDETTI Srl

Via Salvi, 1
44045 Renazzo (FE) – ITALY –

Tel. +39 051/972058

Fax +39 051/972099



© Global Plant Ltd



Guidetti s.r.l.

GUIDE FOR THE CONSULTATION OF THE CATALOGUE

For a simpler consultation we have decided to divide this spare parts catalogue into two main sections:

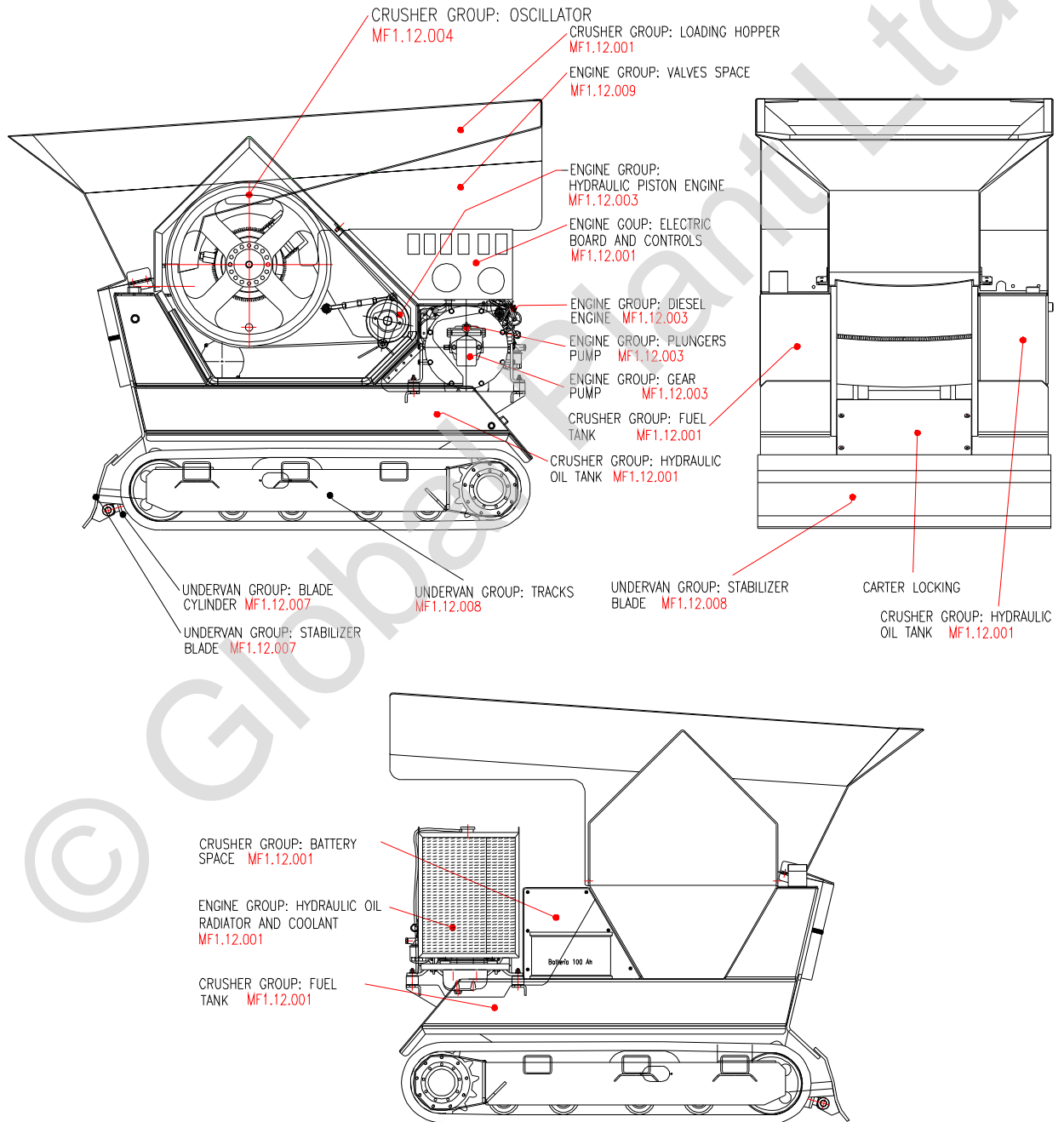
- SECTION INCLUDING THE SPARE PARTS
- SECTION INCLUDING THE MACHINE'S HYDRAULIC INSTALLATION

Each spare part has been indicated with a number which refers to a specific plate in which are all the necessary information for the order of the same.

© Global Plant Ltd



INDEX OF THE MACHINE'S GROUPS

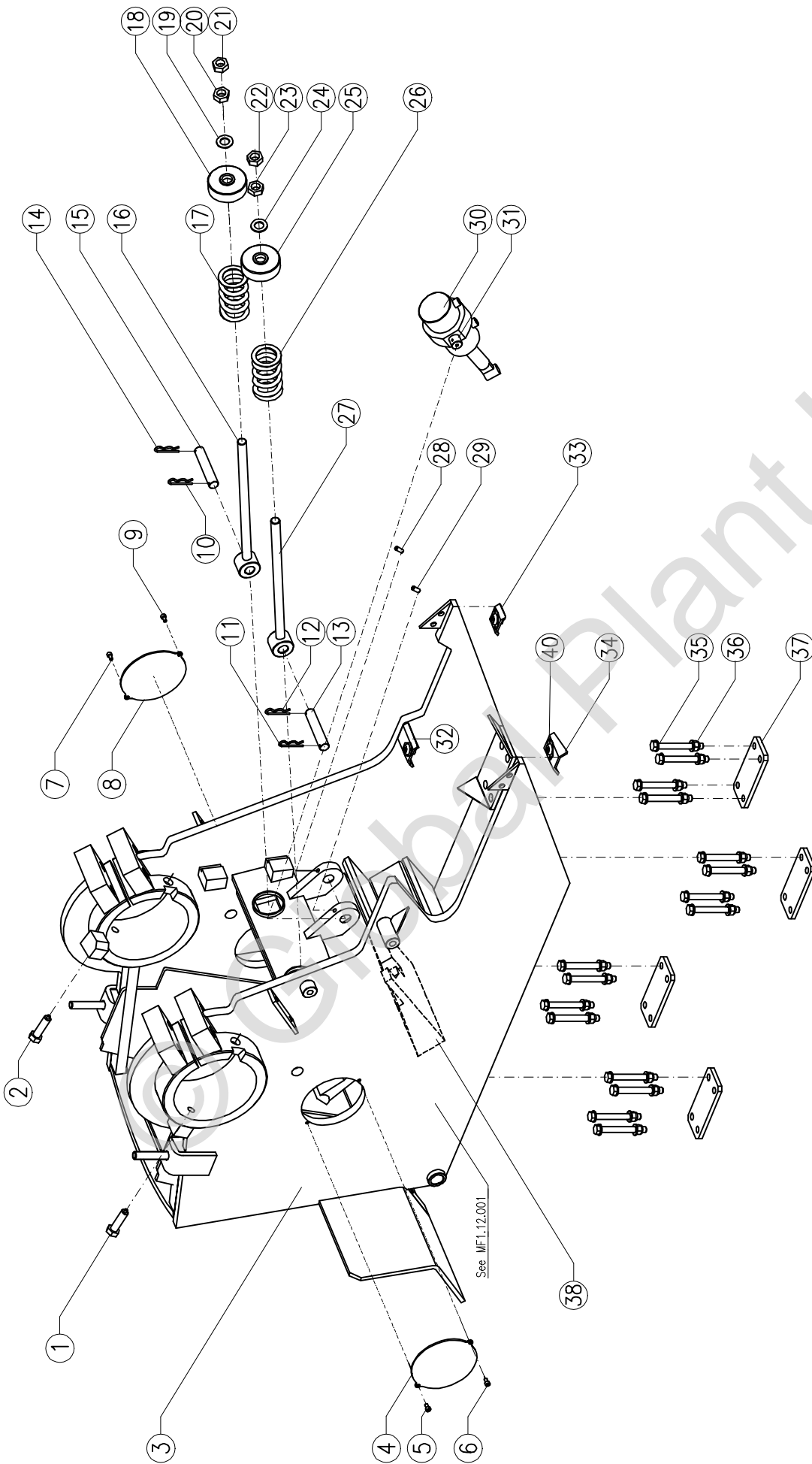




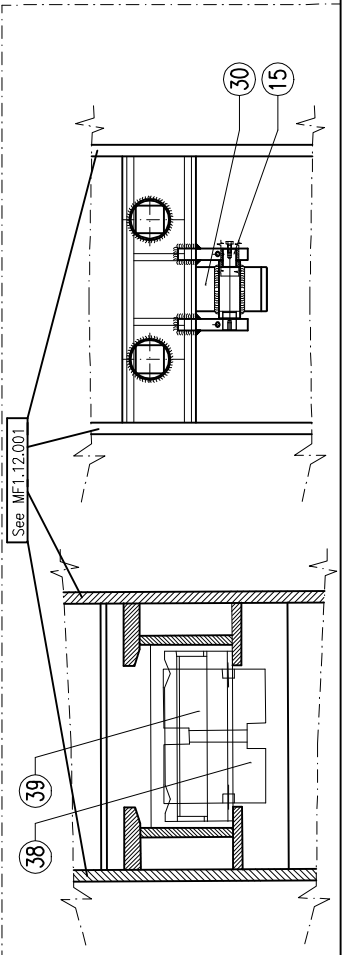
Guidetti s.r.l.

MINI STONE CRUSHER MF 450	
INDEX	
PLATE	DESCRIPTION
MF1.12.001	Carter group
	Codes plate MF1.12.001
MF1.12.002	Machine group
	Codes plate MF1.12.002
MF1.12.C02	Machine
	Codes plate MF1.12.C02
MF1.12.003	Engine group
	Codes plate MF1.12.003
MF1.12.004	Oscillator group
	Codes plate MF1.12.004
MF1.12.005	Floating shaft
	Codes plate MF1.12.005
MF1.12.006	Pulley
	Codes plate MF1.12.006
MF1.12.007	Blade group
	Codes plate MF1.12.007
MF1.12.008	Undervan group
	Codes table MF1.12.008
MF1.12.009	Valves group
	Codes plate MF1.12.00
MF1.12.010	Hydraulic section _ carter
	Codes plate MF1.12.010
MF1.12.011	Hydraulic section _ Lift cylinder
	Codes plate MF1.12.011
MF1.12.012	Hydraulic section_Engine
	Codes plate MF1.12.012
MF1.12.013	Hydraulic section_ Pulley
	Codes plate MF1.12.013
MF1.12.014	Hydraulic section _Blade
	Codes plate MF1.12.014
MF1.12.015	Hydraulic section _Undervan
	Codes plate MF1.12.015

MINI STONE CRUSHER MF 450			CARTER_EXPLODED GRAPHIC		
			MF1.12.001		
Ref.	CODE	Qty	DENOMINATION	MATERIAL	Note
1	MF1.02.234	1	Grid assembly		
2		1	Hopper		
3	MF1.05.246	1	Flywheel carter_Oil tank side	INOX AISI 304	
4		1	Fuel cap TM/BP 80 X 2		
5		1	Cap		
6			Oil tank		
7			Electric board		
8			Anti-vibration		
9			Machine body		
10	C0116	2	Little key		
11	MF1.05.245	1	Flywheel carter_fuel tank side	INOX AISI 304	
12	MF1.05.247	2	Carter locking device		
13			Fuel tank		
14	C0116	2	Little key		
15	MF1.05.159	1	Carter_radiator side		
16			Seeger		
17			Pivot		
18			Seeger		
19			Seeger		
20			Pivot		
21			Seeger		
22	MF1.05.132	1	Battery locking panel	Fe 360	
23		1	Battery		
24	MF1.05.161	1	Left supporting arm		
25	MF1.05.156	1	Left support bar		
26			Flashing - signal lamp		
27	MF1.05.154	1	Back carter		
28	MF1.05.247	2	Carter locking device		
29			Seeger		
30			Pivot		
31			Seeger		
32			Seeger		
33			Pivot		
34			Seeger		
35	MF1.05.160	1	Right supporting arm		
36	MF1.05.155	1	Right support bar		
37	MF1.05.258	1	Lubricator holder composed of:		
			10 Junction pipes CL 6510-6-1/8		
			10 lubricators 1/8		
			Pipe Rilsan 4x6		

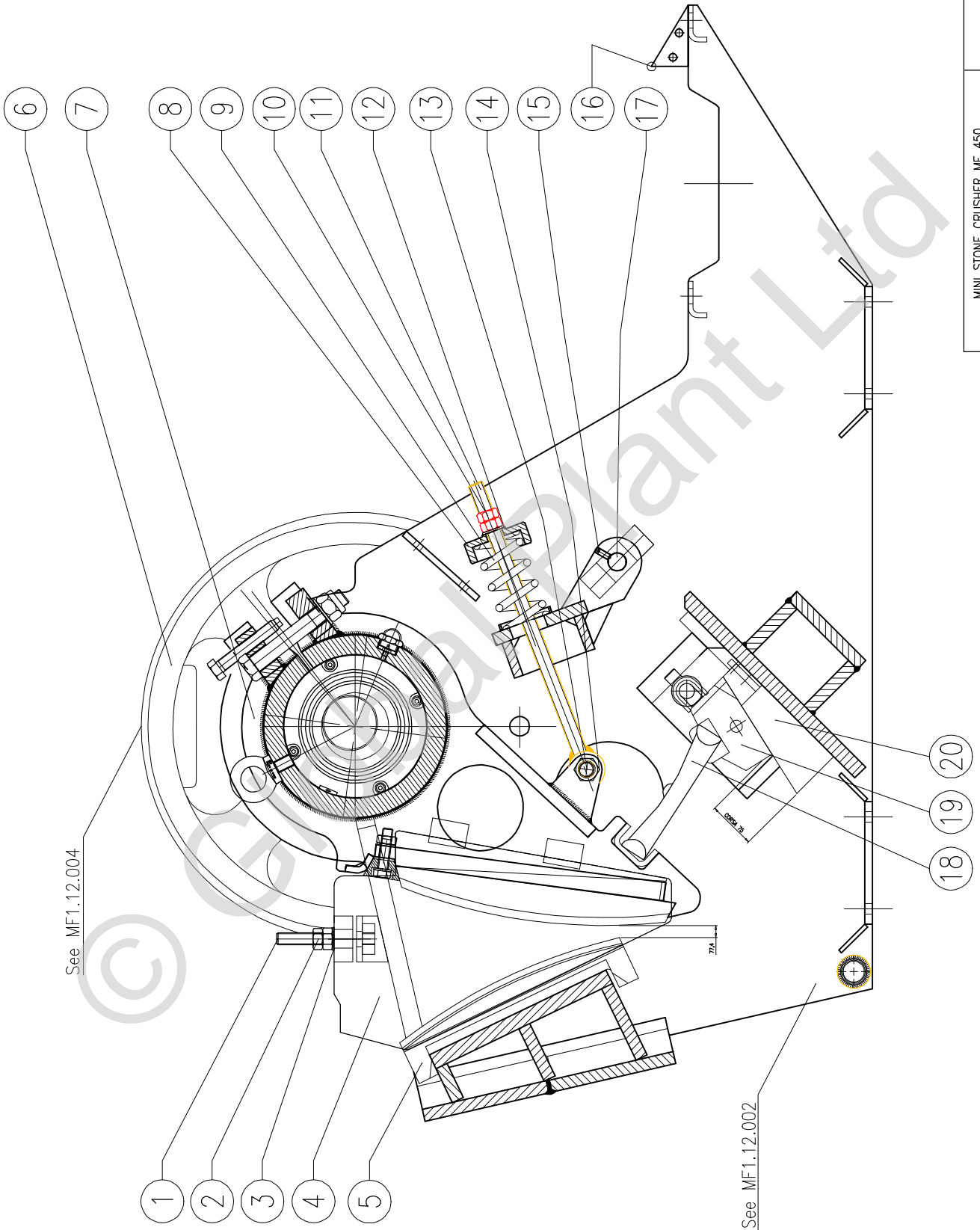


See MF1.12.001



See MF1.12.001

MINI STONE CRUSHER MF 450			MACHINE GROUP_EXPLODED GRAPHIC		
Ref.	CODE	Qty	DENOMINATION	MATERIAL	Note
1	MF1.02.064	2	Special screw		
2	MF1.02.064	2	Special screw		
3			Machine body		
4	MF1.05.063	2	Locking plate_ holes d. 180		
5	-		Screw	Fe 360	
6	-		Screw		
7	-		Screw		
8	MF1.05.063	2	Locking plate_ holes d. 180	Fe 360	
9	-		Screw		
10		4	Joint pin UNI 8833 - A - 5		
11		4	Joint pin UNI 8833 - A - 5		
12		4	Joint pin UNI 8833 - A - 5		
13		2	Adjust		
14		4	Joint pin UNI 8833 - A - 5		
15		2	Adjust		
16	MF1.01.093	2	Spring tie rod	C40	
17	MF1.01.090	2	Spring	C 72	
18	MF1.01.094	2	Spring lock	Fe 360	
19	CV07005		Washer		
20			Nut		
21	CV13002		Self-locking nut		
22	CV13002		Self-locking nut		
23			Nut		
24	CV07005		Washer		
25	MF1.01.094	2	Spring lock		
26	MF1.01.090	2	Spring		
27	MF1.01.093	2	Spring tie rod		
28			Screw UNI 5927 M.10 X 28		
29			Screw UNI 5927 M.10 X 28	C40	
30	MF1.02.258	1	Adjust cylinder toggle link wedge	Fe 360	
31	MF1.02.121	2	Pivot		
32	MF1.08.271	1	Engine fixing bar	Fe 360	
33	MF1.08.272	1	Engine fixing bar	Fe 360	
34	MF1.08.273	1	Engine fixing bar	Fe 360	
35			Screw		
36			Nut	Fe 360	
37	MF1.02.018	4	Backplate		
38	MF1.01.089	1	Sliding wedge		
39	MF1.01.088	1	Collar thrust bearing		
40	C0898	3	Anti-vibration plate TCN 60-2		



See MF1.12.004

See MF1.12.002

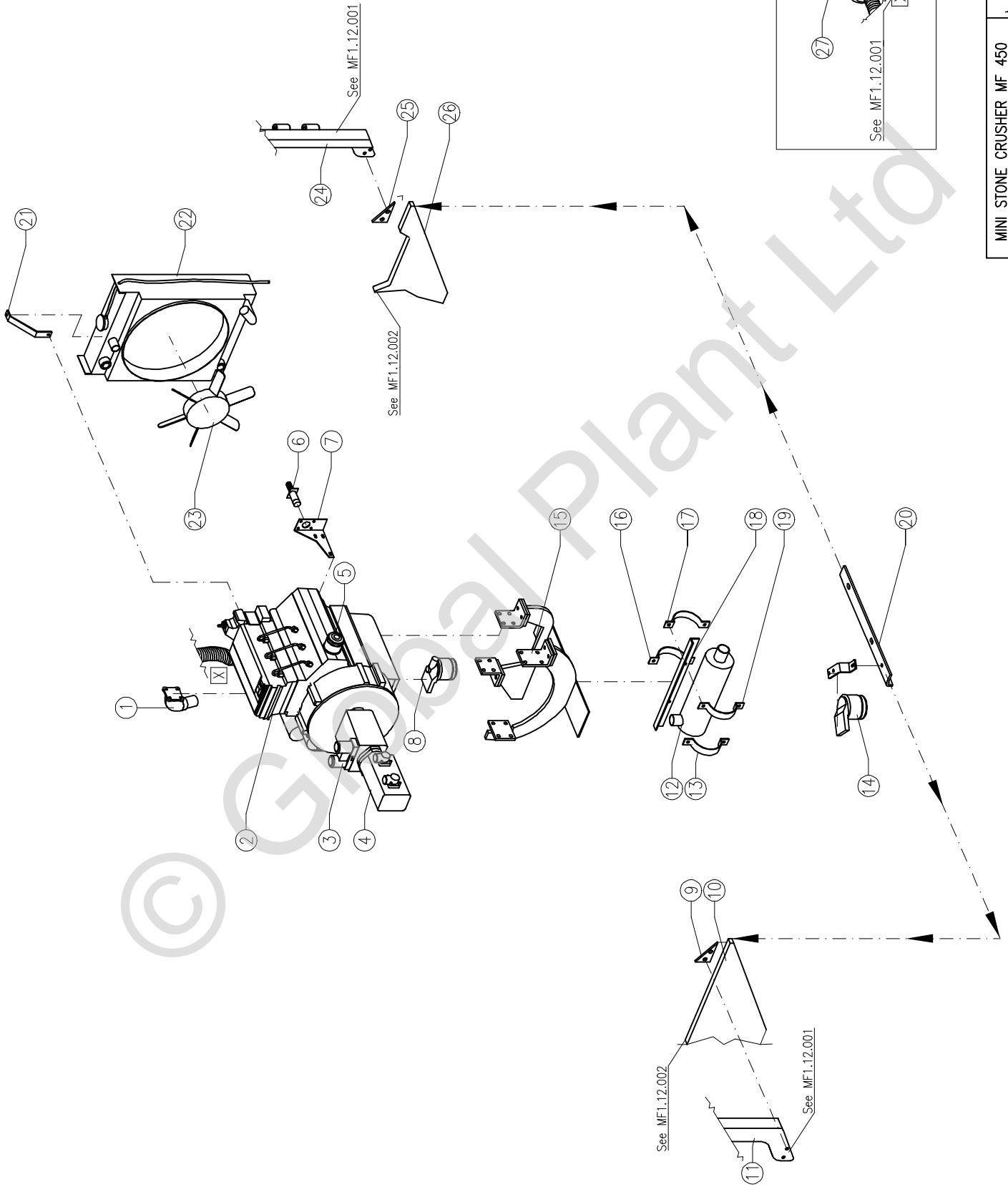
MINI STONE CRUSHER MF 450

MACHINE GROUP

MF1.12.C02

Questo disegno e' esclusivo proprietaria della GUIDETTI s.r.l. la quale ne vieta la diffusione, la riproduzione e la cessione a terzi

MINI STONE CRUSHER MF 450			MACHINE BODY EXPLODED DRAWING		
			MF1.12.C02		
Ref.	CODE	Qty	DENOMINATION	MATERIAL	Note
1	MF1.02.095	2	Wedges locking screw		
2	CU17004	4	Middle nut UNI 7473		
3	CU07004	2	Washer ø20		
4	MF1.02.043	2	Armour locking wedge	Fe510	
5	MF1.02.050	1	Fixed armour		
6	MF1.01.033	2	Flywheel		
7	MF1.01.033A	2	Oscillator		
8	MF1.01.094	2	Sprig lock	Fe360	
9	MF1.01.090	2	Release spring for oscillator	C72	
10		4	Middle nut		
11	MF1.01.093	2	Spring tie rod		
12		2	Washer		
13		2	Screw		
14		2	Self-Locking nut + Washer		
15		2	Dowel		
16	MF1.02.242	2	Bearing plate		
17	MF1.02.121	2	Pivot	C40	
18	MF1.01.092	1	Toggle lever plate		
19	MF1.01.088	1	Collar thrust bearing		
20	MF1.01.089	1	Sliding wedge		



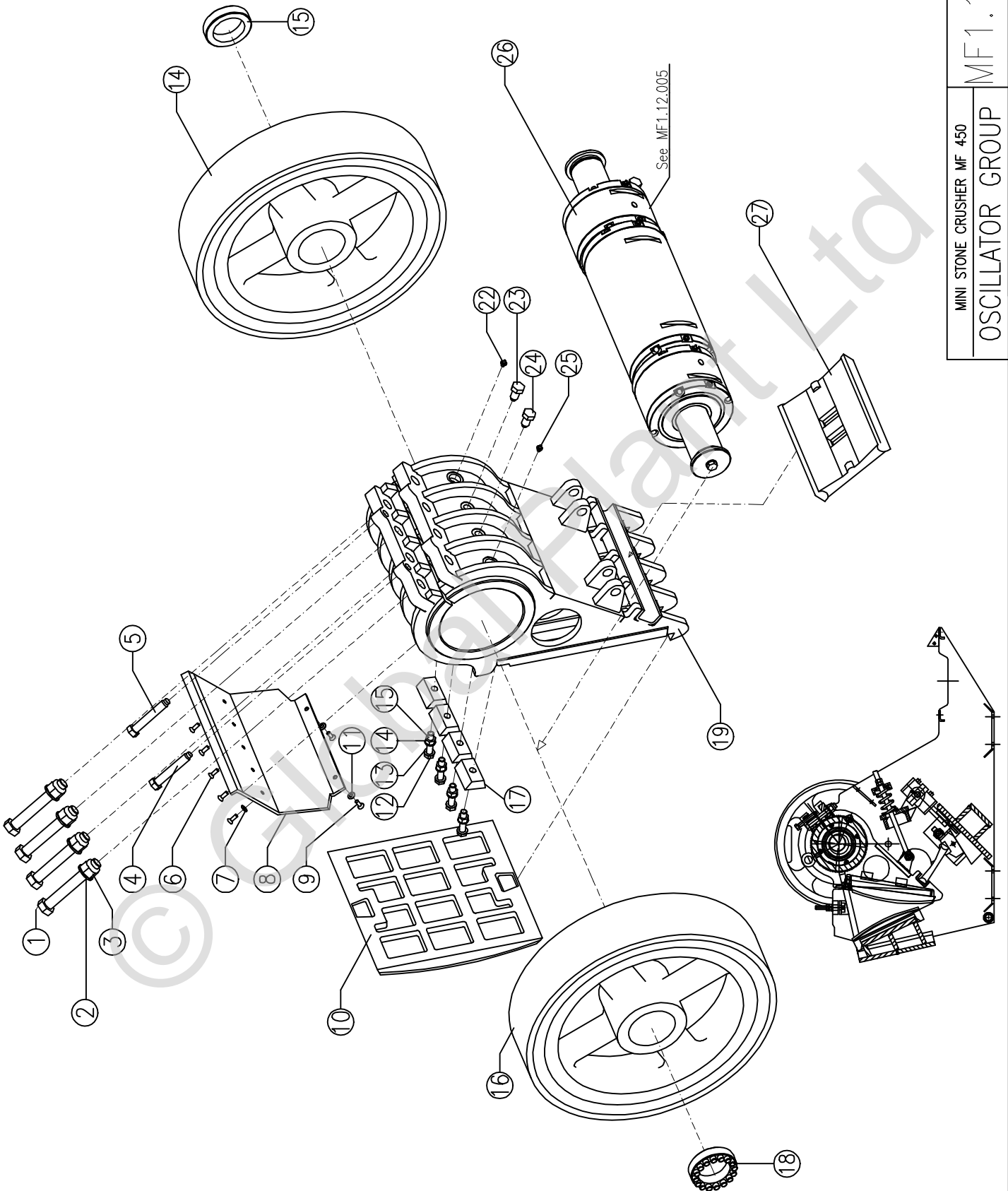
MINI STONE CRUSHER MF 450

ENGINE GROUP

MF1.12.003

MINI STONE CRUSHER MF 450			ENGINE_EXPLODED GRAPHIC		
			MF1.12.003		
Ref.	Denomination	Qty	DENOMINATION	Material	Note
1	MF1.08.240	1	Exhaust box collecting pipe	Fe 360	
2	C0688	1	Diesel engine Isuzu 3LD1 - PW15		
3	C0895	1	Pump 70142 - 20 CC.		
4	C0696	1	Lamborghini pump SMLPD / B 211 + 211S		
5		1	Engine filter		Oil engine filter Code C0811
6	C0897	1	Electromagnetic 3LD1		
7	MF1.08.268	1	Radiator upper brackets	Fe 360	
8		1	ISUZU Filter		Diesel filter cartridge Code C0812
9	MF1.02.242	2	Support plate		
10	MF1.02.021	1	Engine side	Fe 360	
11	MF1.05.156	1	Left support bar		
12	C0672	1	Exhaust box M045193		
13	MF1.08.237	4	Exhaust box clamp		
14	C0676	1	Hydraulic filter		Hydraulic oil filter cartridge Code C0816
15	MF1.08.274	1	Engine fixing bars	Fe 360	
16	MF1.08.237	4	Exhaust box clamp		
17	MF1.08.237	4	Exhaust box clamp		
18	MF1.02.260	1	Engine fixing bars		
19	MF1.08.237	4	Exhaust box clamp		
20	MF1.02.019	2	Engine fixing bars	Fe 360	
21	MF1.08.270	1	Radiator upper brackets	Fe 360	
22	C0678	1	Water/oil radiator_fan collector d.390		
23		1	Fan		
24	MF1.05.155	1	Right support bar		
25	MF1.02.242	2	Support plate		
26	MF1.02.021	1	Engine side	Fe 360	
27		1	Exhaust box		Primary cartridge air filter 5"(P772578) Code C0817
					Safety cartridge (P775298)

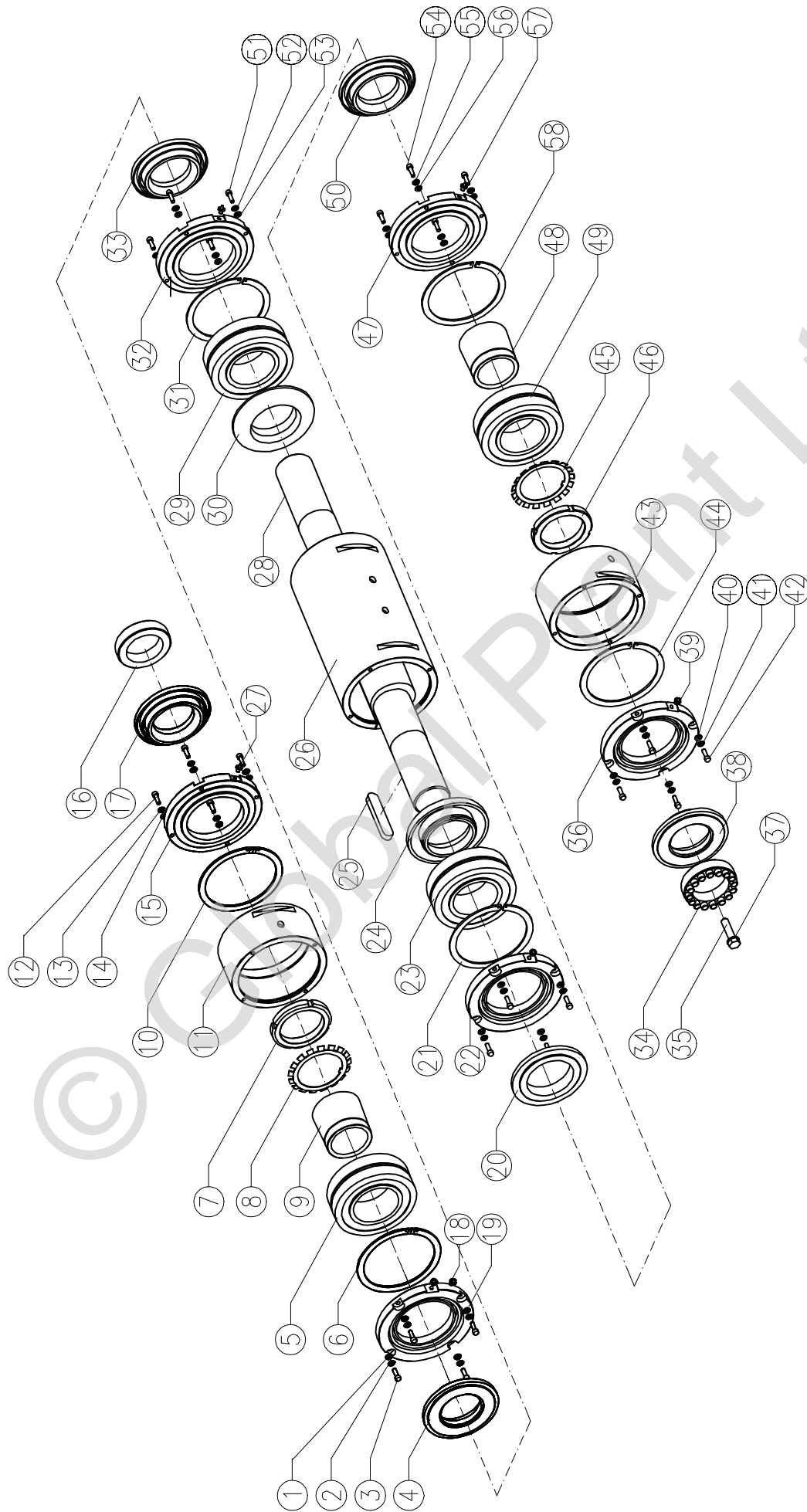
NOTE: it is advised to replace the safety cartridge every 3 substitutions of the primary cartridge. The safety cartridge assures that the dust does not enter the engine.



MINI STONE CRUSHER MF 450
OSCILLATOR GROUP
MF1.12.004

Questo disegno è esclusivo proprietà della GUIDETTI S.p.A. in quale ne vieta la diffusione, la riproduzione e la cessione a terzi.

MINI STONE CRUSHER MF 450			OSCILLATOR_EXPLODED GRAPHIC		
Ref.	Denomination	Qty	DENOMINATION	Material	Note
1		4	Screw TE UNI 5738 M 27 x 2x 190	10.09	
2		4	Self-blocking nut UNI 7473 M 27 x 2		
3		4	Washer UNI 6592 d. 28 x 50		
4	MF1.01.111	2	Special screw oscillator opening	10.09	
5	MF1.01.111	2	Special screw oscillator opening	10.09	
6		7	Washer UNI 5933 M10 x 25	10.09	
7		7	Screw		
8	MF1.01.257	1	Oscillator cover - plate		
9		7	Washer UNI 5933 M10 x 25		
10	MF1.02.049	1	Oscillator armour		
11		7	Screw		
12		8	Washer UNI 6592 17X30		
13		4	Screw TE UNI 5739 M 16 X 75	10.09	
14		8	Washer UNI 6592 17X30		
15		8	Middle nut UNI 5588 M 16		
16	MF1.01.033	2	Flywheel		
17	MF1.01.048	4	Armour wedge lock	Fe-360	
18		2	RCK 40		
19	MF1.01.109	1	Oscillator_assembly		
20	MF1.01.033	2	Flywheel		
21		2	RCK 40		
22		10	CL 6510-6-1/8		
23	MF1.01.040	2	Adjust special screw		
24	MF1.01.040	2	Adjust special screw		
25		10	CL 6510-6-1/8		
26		1	Oscillator shaft		
27	MF1.01.092	1	Toggle link plate		



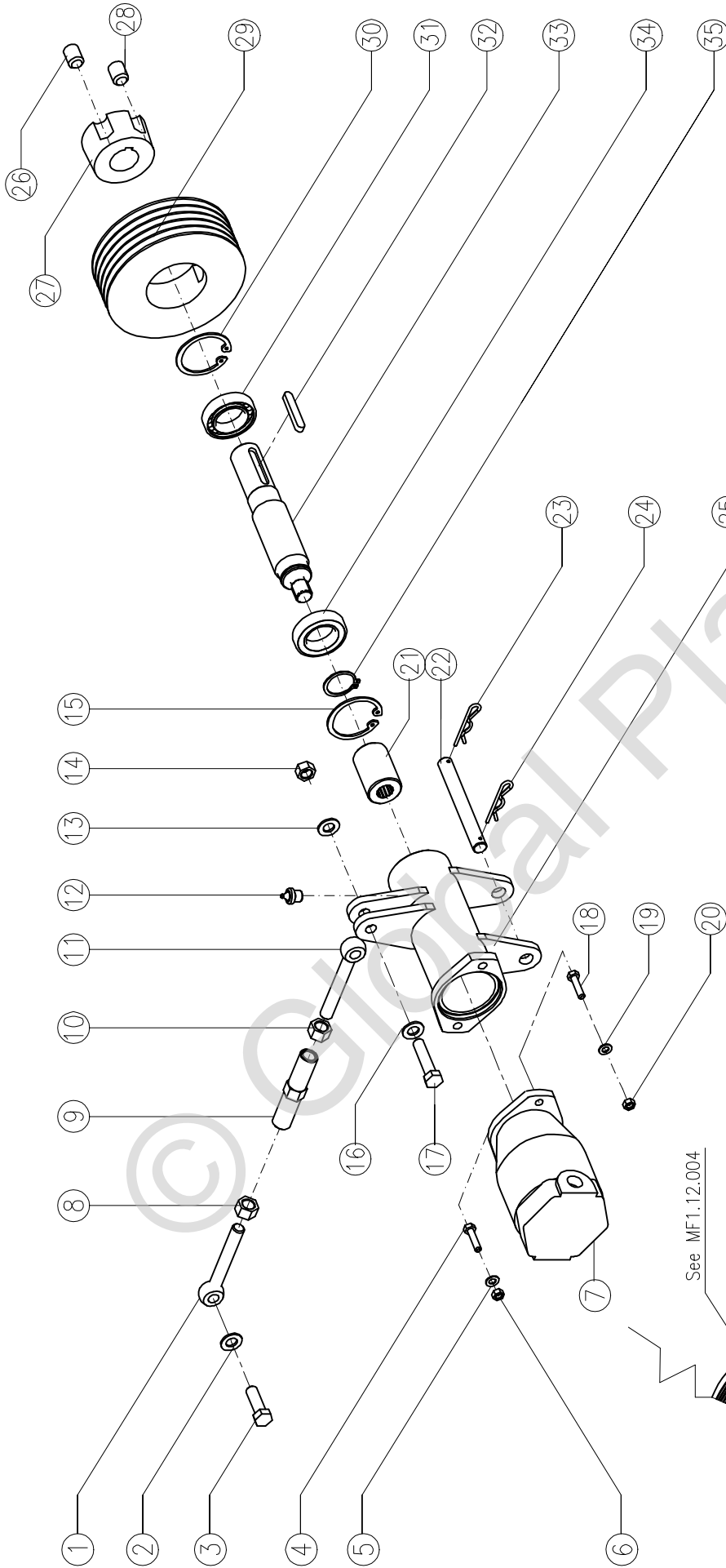
MINI STONE CRUSHER MF 450

FLOATING SHAFT

MF1.12.005

Questo disegno è esclusivo proprietà della QUARETTI s.p.a. la quale ne vieta la diffusione, la riproduzione e la cessione a terzi.

MINI STONE CRUSHER MF 450			SHAFT_EXPLODED GRAPHIC		
			MF1.12.005		
Ref.	Denomination	Qty	DENOMINATION	Material	Note
1		24	Washer UNI 6592 - 8X14		
2		24	Internal elastic toothed washer M8		
3	CV09001	24	Screw Tcce UNI 5931 M8 x 25		
4	MF1.01.026	4	External pipe cover	Fe 510	
5	C0658	2	Bearing 23222 CC / W33		
6	CV06001	6	Seeger for hole UNI 7437 d. 200		
7	C0572	2	Ring - M.110 X 2 KM 22		
8	C0573	2	Safety washer MB 22		
9	MF1.01.031	2	Traction insert	C 40	
10		6	Seeger for hole UNI 7437 d. 200		
11	MF1.01.002	2	External bearings support	Fe 360	
12		24	Washer UNI 6592 - 8X14		
13		24	Internal elastic toothed washer M8		
14	CV09001	24	Screw Tcce UNI 5931 M8 x 25		
15	MF1.01.024	6	Little cover	Fe 510	
16	C0682	2	RCK 40 (90 X 130)		
17	MF1.01.026	4	External pipe cover	Fe 510	
18			CL 6510-6-1/8		
19	MF1.01.024	6	Little cover	Fe 510	
20	MF1.01.025	2	Internal pipe cover	Fe 510	
21		6	Seeger for hole UNI 7437 d. 200		
22	MF1.01.024	6	Little cover	Fe 510	
23	C0657		Bearing 23222 CCK / W33		
24	MF1.01.030	2	Internal bearing distance washer	Fe 510	
25		2	Inserted tongue UNI 6604 25 X 14 X 140		
26	MF1.01.001	1	Bearing supports	Fe 360	
27			CL 6510-6-1/8		
28	MF1.01.022	1	Mill shaft	38NCD4B	
29	C0657		Bearing 23222 CCK / W33		
30	MF1.01.030	2	Internal bearing distance washer	Fe 510	
31	CV06001	6	Seeger for hole UNI 7437 d. 200		
32	MF1.01.024	6	Little cover	Fe 510	
33	MF1.01.025	2	Internal pipe cover	Fe 510	
34	C0682	2	RCK 40 (90 X 130)		
35			Screw		
36	MF1.01.024	6	Little cover	Fe 510	
37			Washer		
38	MF1.01.026	4	External pipe cover	Fe 510	
39		10	CL 6510-6-1/8		
40		24	Washer UNI 6592 - 8X14		
41		24	Internal elastic toothed washer M8		
42	CV09001	24	Screw Tcce UNI 5931 M8 x 25		
43	MF1.01.002	2	External bearings support	Fe 360	
44	CV06001	6	Seeger for hole UNI 7437 d. 200		
45	C0573	2	Safety washer MB 22		
46	C0572	2	Ring - M.110 X 2 KM 22		
47	MF1.01.024	6	Little cover	Fe 510	
48	MF1.01.031	2	Traction insert	C 40	
49	C0658	2	Bearing 23222 CC / W33		
50	MF1.01.026	4	External pipe cover	Fe 510	
51		24	Screw Tcce UNI 5931 M8 x 25		
52		24	Internal toothed elastic washer M8		
53		24	Washer UNI 6592 - 8X14		
54	CV09001	24	Screw Tcce UNI 5931 M8 x 25		
55		24	Internal toothed elastic washer M8		
56		24	Washer UNI 6592 - 8X14		
57		10	CL 6510-6-1/8		
58	CV06001	6	Seeger for hole UNI 7437 d. 200		



See MF1.12.004

See MF1.12.002

MINI STONE CRUSHER MF 450	MF1.12.006
PULLEY	

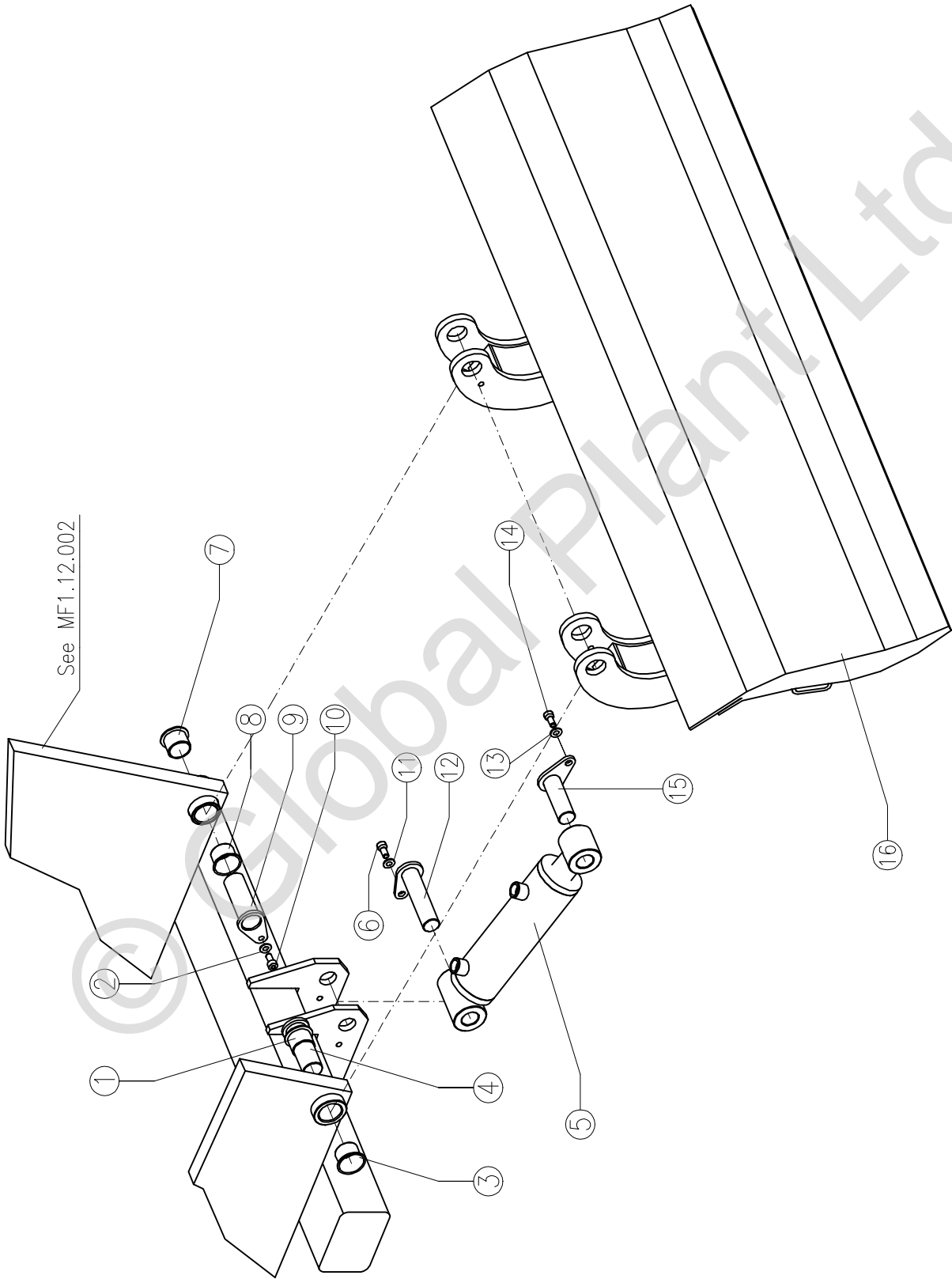
Questo disegno e' esclusivo proprietario della GUBETTI s.p.a. la quale ne vieta la diffusione, la riproduzione e la cessione a terzi.

MINI STONE CRUSHER MF 450			PULLEY_EXPLODED GRAPHIC		
Ref.	Denomination	Qty	DENOMINATION	Material	Note
1	CV02001	2	Tie rod UNI 6058 Fil. DX M 16x 120		
2	CV07006	3	Washer - UNI 6592 - 15x28		
3	CV11002	1	Screw T.E. - UNI 5739 - M14x45	10,9	
4			Screw		
5			Washer		
6			Nut		
7	C0686	1	Pump EATON 70142 - 20 CC.		
8			Middle nut UNI 5588 M16		
9	CV03001	1	Sleeve UNI 1677 M16		
10			Middle nut UNI 5588 M16		
11	CV02001	2	Tie rod UNI 6058 Fil DX M16 x 120		
12			Lubricator -1/4" BSP DIN 7663 A		
13			Washer - UNI 6592 - 15x28		
14			Middle nut UNI 5588 M14		
15	CV06002	2	Seeger for hole UNI 7437 D.68		
16	CV11003		Washer - UNI 6592 - 15x28		
17			Screw T.E. - UNI 5739 - M14x60	10,9	
18			Screw		
19			Washer		
20			Nut		
21	MF1.04.058	1	Junction bush	C40	
22	MF1.04.059	1	Joint pin	C40	
23			Pin UNI 8833 - A - 4 filo 3,5 - L=80		
24			Pin UNI 8833 - A - 4 filo 3,5 - L=80		
25	MF1.04.054	1	Pulley monoblock control	Fe 360	
26					
27	SC0056	1	Conical insert 2517 hole 38		
28					
29	SC006	1	Pulley SPZ 180 x 5 grooves		
30	CV06002	2	Seeger for hole UNI 7437 d.68		
31	C0578	2	Bearing 6008-Z		
32	C0717	1	Inserted tongue UNI 6604 10 x 8 x 60		
33	MF1.04.057	1	Pulley shaft	C40	
34	C0578	2	Bearing 6008-Z		
35	CV05001	1	Seeger for shaft UNI 7435 D.40		
36	SC0130	1	Belts SPZ 2800		

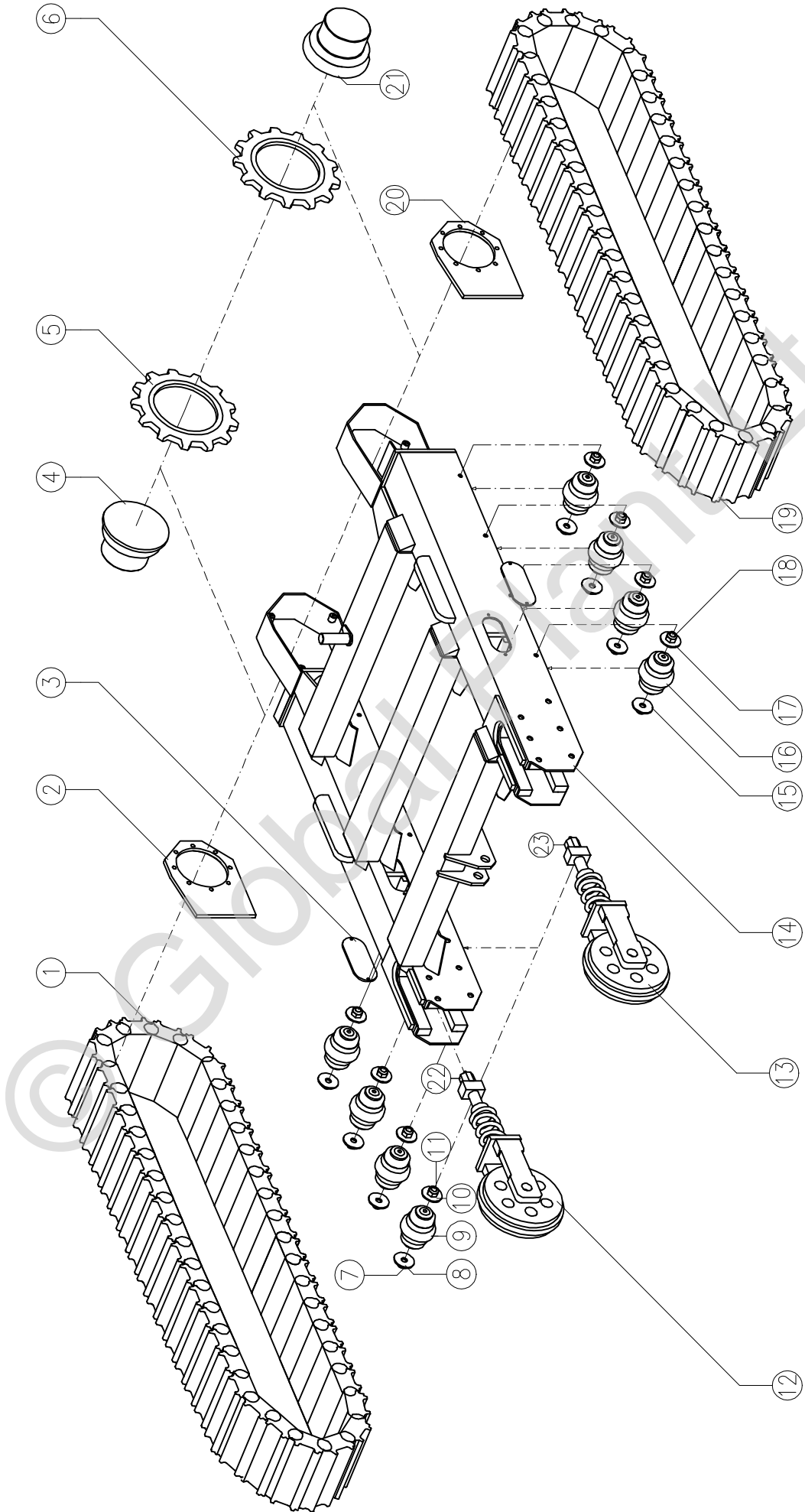
MF1.12.007

MINI STONE CRUSHER MF 450
BLADE GROUP

Questo disegno e' esclusivo, proprieta' della GIUNETTI s.p.a. la quale ne vieta la diffusione, la riproduzione e la cessione a terzi.



MINI STONE CRUSHER MF 450			BLADE_EXPLODED GRAPHIC		
Ref.	Denomination	Qty	DENOMINATION	Material	Note
1		4	Self-lubricating bush GLY PBG 303426-F		
2			Washer UNI 6592 8,4 x 17		
3		4	Self-lubricating bush GLY PBG 303426-F		
4	MF1.06.071	2	Assembling arm pivot		
5	MF1.06.065	1	Hydraulic cylinder		
6			Screw TCCE UNI 5931 M.8 X 14	Fe 360	
7		4	Self-lubricating bush GLY PBG 303426-F		
8		4	Self-lubricating bush GLY PBG 303426-F		
9	MF1.06.071	2	Assembling arm pivot		
10			Screw TCCE UNI 5931 M.8 X 14	Fe 360	
11			Washer UNI 6592 8,4 x 17		
12	MF1.06.085	2	Blade cylinder pivots	Fe 360	
13			Washer UNI 6592 8,4 x 17		
14	CV09003		Screw TCCE UNI 5931 M.8 X 14	Fe 360	
15	MF1.06.085	2	Blade cylinder pivots	Fe 360	
16	MF1.06.079	1	Total blade		



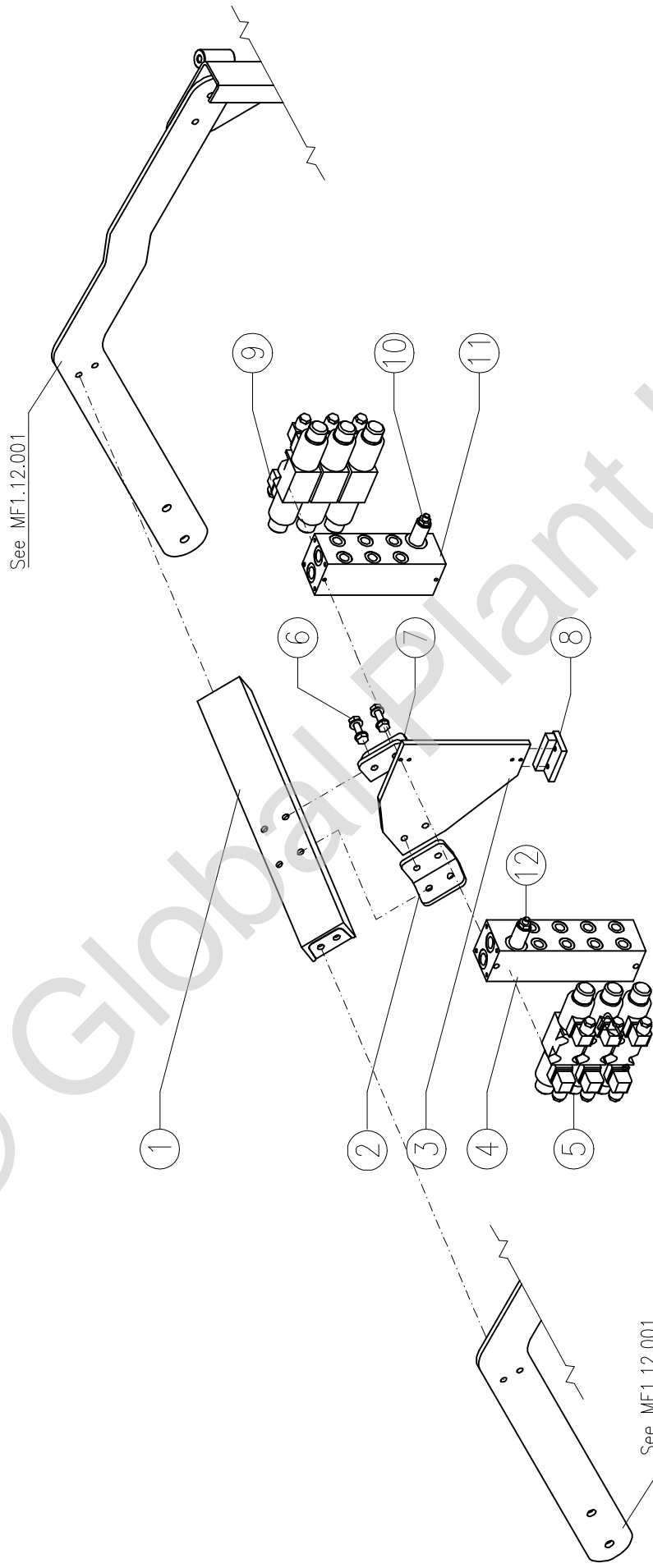
MINI STONE CRUSHER MF 450

UNDERVAN GROUP

MF1.12.008

Questo disegno è esclusivo proprietà della GUIDETTI S.p.A. la quale ne vieta la diffusione, la riproduzione e la cessione a terzi.

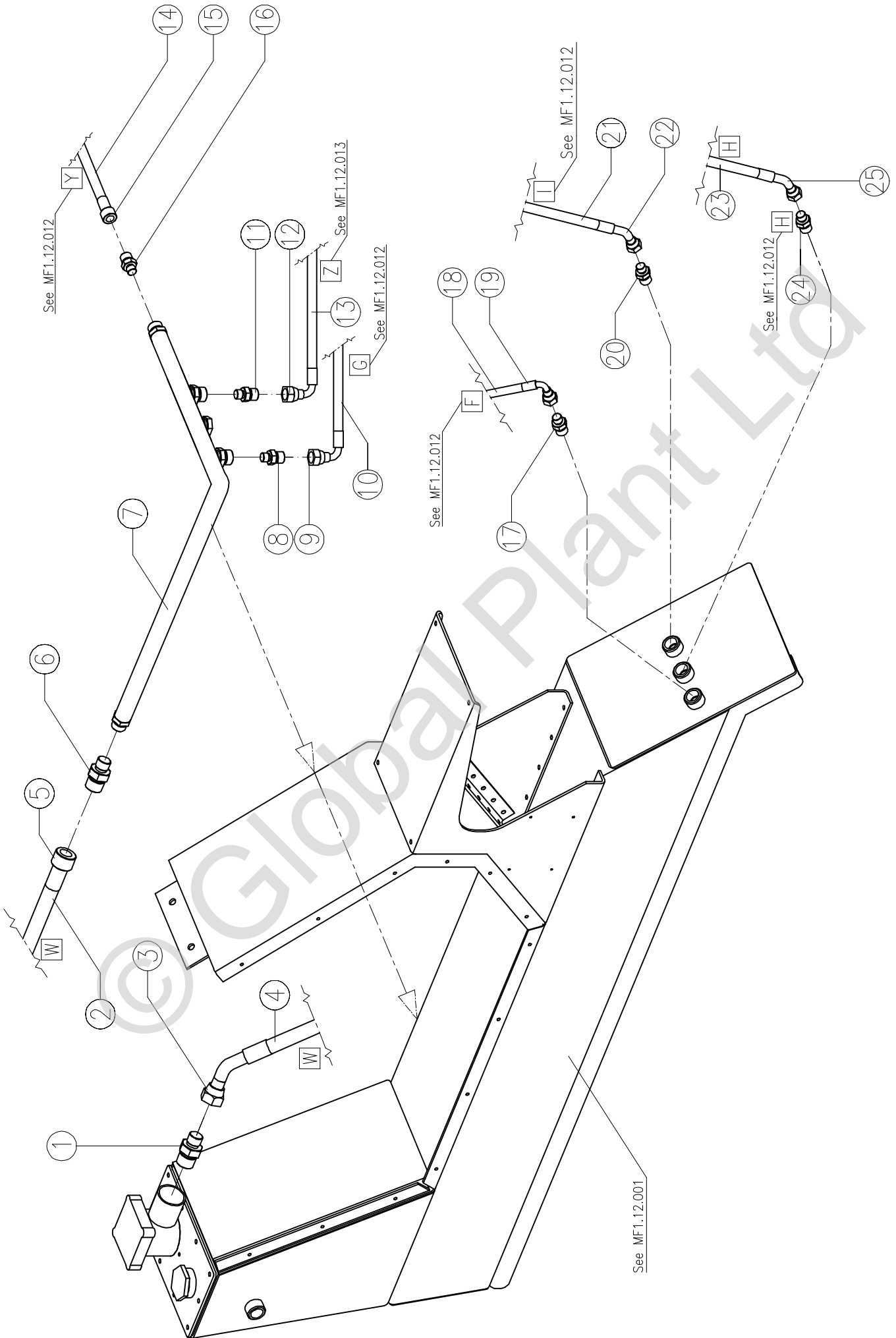
MINI STONE CRUSHER MF 450			UNDERVAN_EXPLODED GRAPHIC		
			MF1.12.008		
Ref.	Denomination	Qty	DENOMINATION	Material	Note
1		2	Track		
2	MF1.11.192	1	Right engine fixing plate	Fe 360	
3	MF1.11.206	2	Lubricator closing plate	Fe 360	
4		2	Geared motor		
5			Toothed wheel		
6			Toothed whee		
7			Nut		
8			Washer		
9	MU1503	2	Total inferior roller		
10			Washer		
11			Nut		
12			Track turnbuckle		
13			Track turnbuckle		
14			Undervan		
15			Washer		
16	MU1503	2	Total inferior roller		
17			Washer		
18			Nut		
19			Track		
20	MF1.11.193	1	Left engine fixing plate	Fe 360	
21		2	Geared motor		
22			Lubricator valve		



MINI STONE CRUSHER MF 450	MF1.12.009
VALVES GROUP	

Questo disegno è esclusiva proprietà della GOMETTI s.p.a. in quale ne vieta la diffusione, la riproduzione e la cessione a terzi.

MINI STONE CRUSHER MF 450			ELECTRIC VALVES_EXPLODED GRAPHIC		
Ref.	Denomination	Qty	DENOMINATION	Material	Note
1	MF1.05.162	1	Electric valves support	Fe 360	
2	MF1.05.164	2	Fixing angle	Fe 360	
3	MF1.05.163	1	Electric valves support plate	Fe 360	
4	MF1.07.183	1	Base for electric valves	Steel	
5		2	N°2 12 Vcc_MD1D-S1/50 e N°1 12 Vcc_MD1D-2TD/50		
6			Screws		
7	MF1.05.164	2	Fixing angle	Fe 360	
8	MF1.05.165	1	Inferior bed plate	Fe 360	
9		2	N°2 12 Vcc_MD1D-S1/50 e N°1 12 Vcc_MD1D-2TD/50		
10		2	Valves of max power		
11	MF1.07.101	1	Base for the electric valves	Steel	
12		2	Valves of max power		

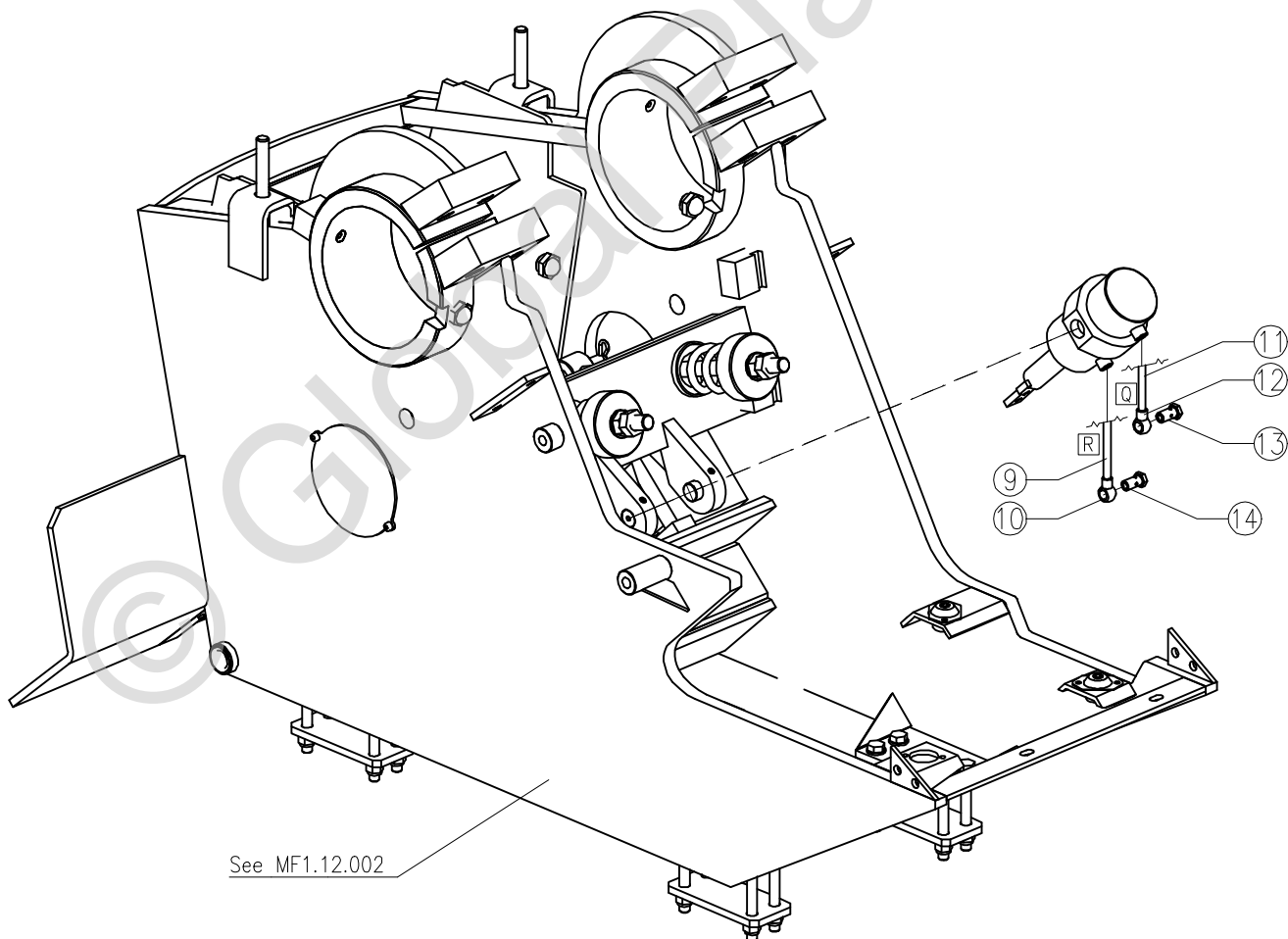
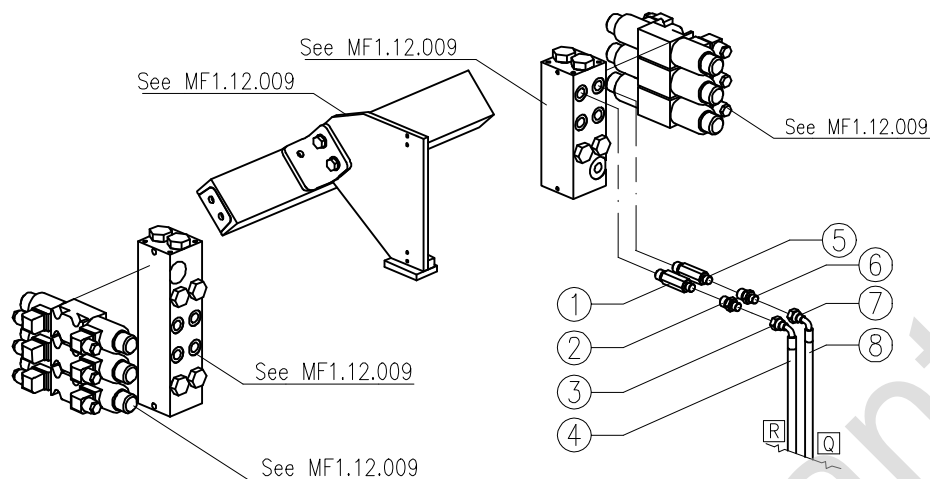


MINI STONE CRUSHER MF 450

HYDRAULIC SECTION - CARTER

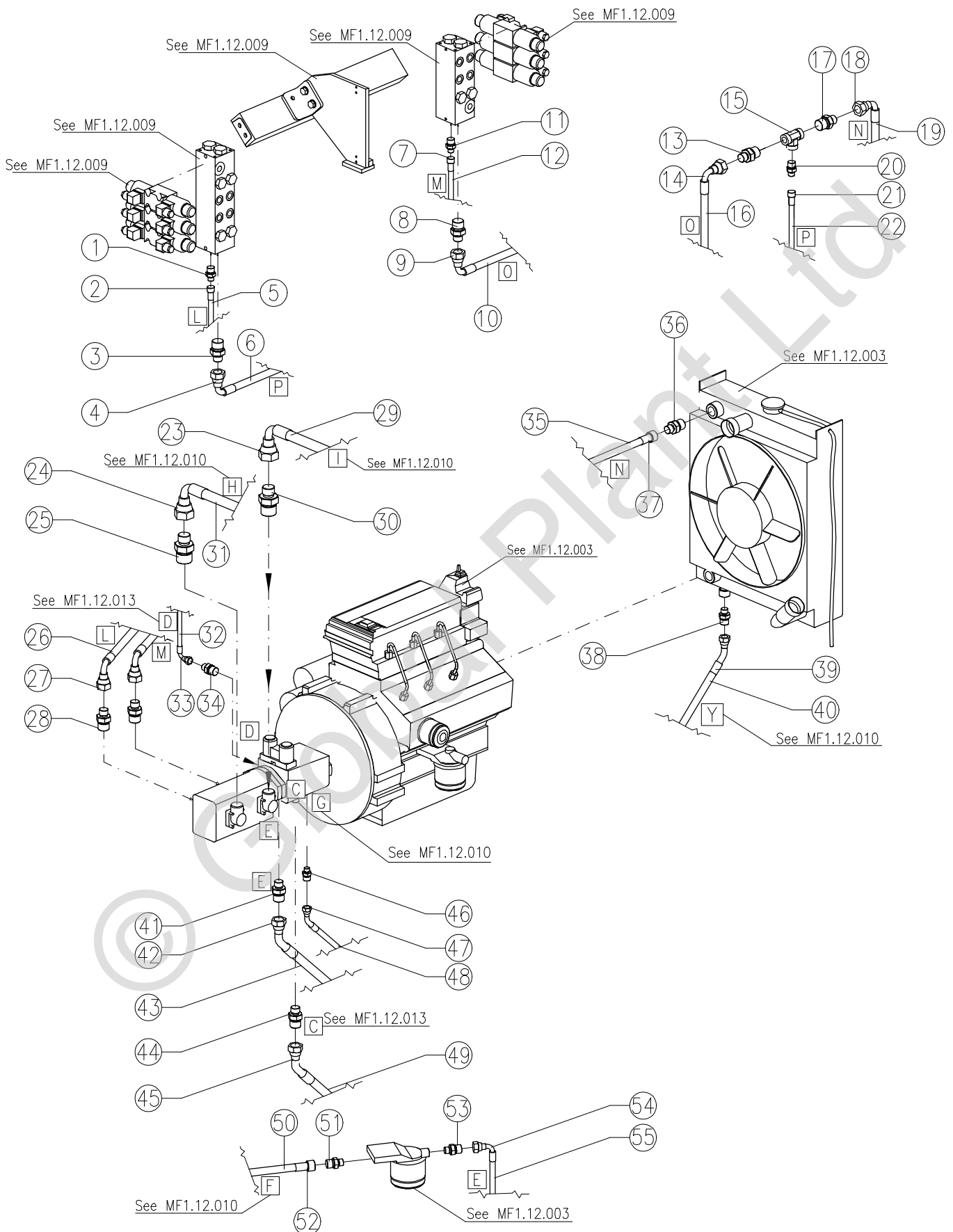
MF1.12.010

MINI STONE CRUSHER MF 450			HYDRAULIC SECTION CARTER_EXPLODED GRAPHIC		
Ref.	Denomination	Qty	DENOMINATION	Material	Note
1	N°5		Nipples		
2	N°5		Pipe 1" R1 L=510		
3	N°5		Junction pipe C 45 1"		
4	N°5		Pipe 1" R1 L=510		
5	N°5		Female junction pipe		
6	N°5		Nipples		
7	MF1.08.250		Iron pipe		
8	N°21		Nipples		
9	N°21		Junction pipe C90		
10	N°21		Pipe 1/4 R1T L=750		
11	N°22		Nipples		
12	N°22		Junction pipe		
13	N°22		Pipe 1/4 R1T L=300		
14	N°3		Pipe 3/4 R1T L=660		
15	N°3		Junction pipe C90		
16	N°3		Nipples		
17	N°2		Nipples		
18	N°2		Pipe 3/4R1T L=400		
19	N°2		Junction pipe C90 3/4		
20	N°1		Nipples		
21	N°1		Pipe 3/4 R1T L=520		
22	N°1		Junction pipe C45 3/4		
23	N°1		Pipe 3/4R1T L=520		
24	N°1		Nipples		
25	N°1		Junction pipe C45 3/4		



MINI STONE CRUSHER MF 450			HYDRAULIC SECTION_LIFT CYLINDER_EXPLODED GRAPHIC		
Ref.	Denomination	Qty	DENOMINATION	Material	Note
1	N°17		Extension		
2	N°17		Nipples		
3	N°17		Junction pipe C90 3/8		
4	N°17		Pipe 1/4 R2 L=1250		
5	N°18		Extension		
6	N°18		Nipples		
7	N°18		Junction pipe C90 3/8		
8	N°18		Pipe 1/4 R2 L=1150		
9	N°18		Pipe 1/4 R2 L=1150		
10	N°18		Eye screw		
11	N°17		Pipe 1/4 R2 L=1250		
12	N°17		Eye screw		
13	N°18		Round screw		
14	N°17		Round screw		

© Global Plant Ltd

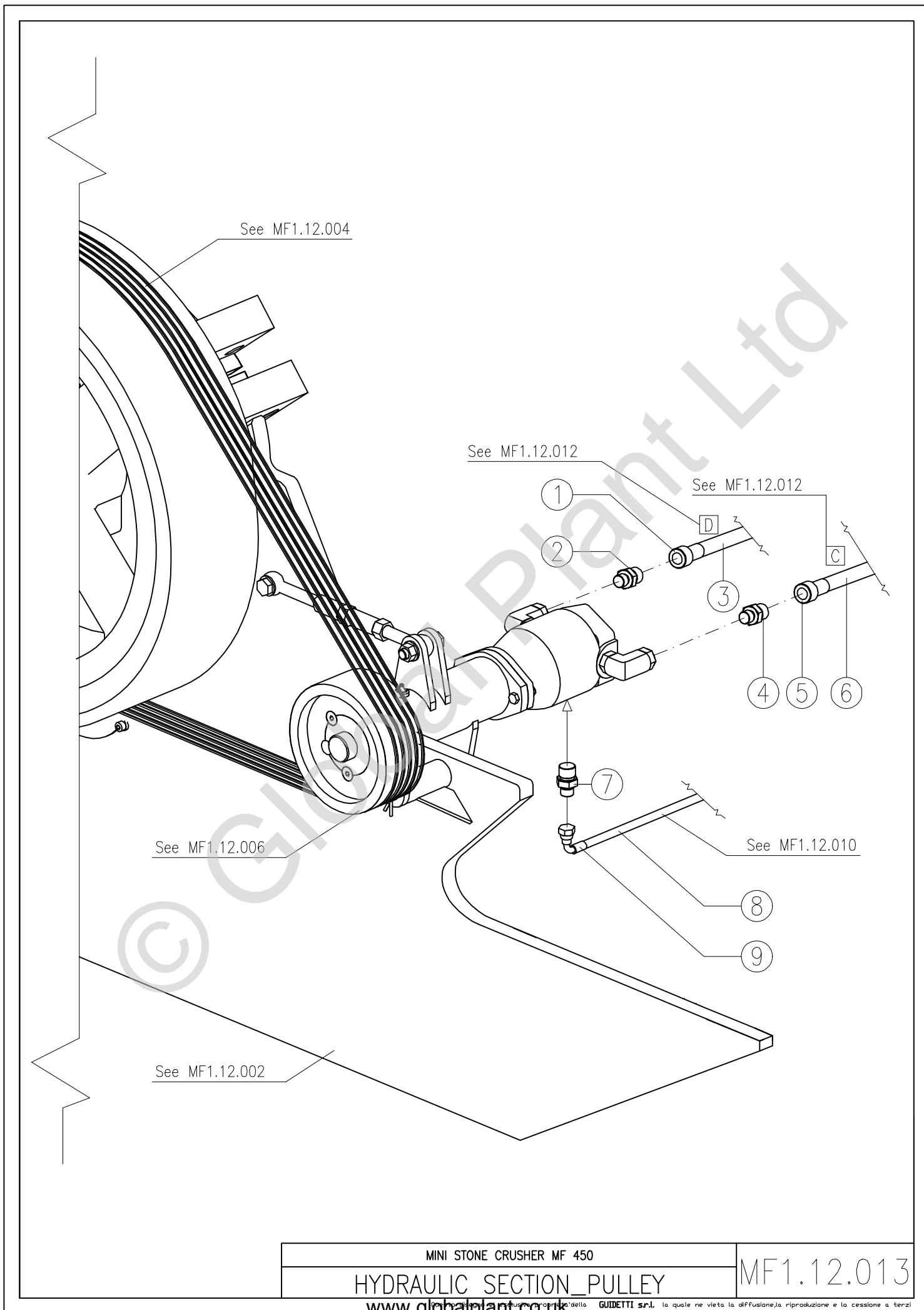


MINI STONE CRUSHER MF 450

HYDRAULIC SECTION_ENGINE

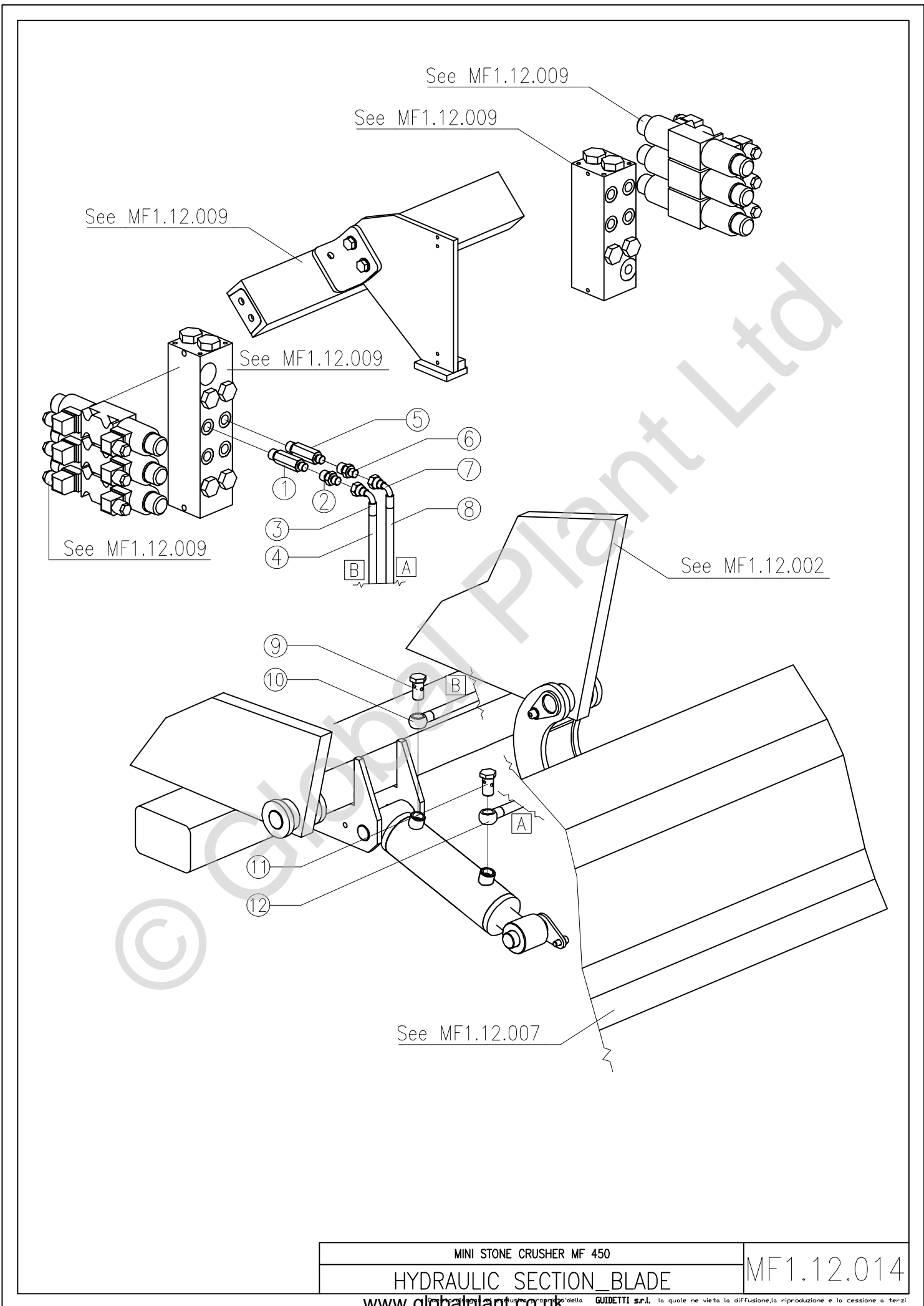
MF1.12.012

MINI STONE CRUSHER MF 450			HYDRAULIC SECTION_ENGINE_EXPLODED GRAPHIC		
			MF1.12.012		
Ref.	Denomination	Qty	DENOMINATION	Material	Note
1	N°8		Nipples		
2	N°8		Female junction pipe		
3	N°10		Nipples		
4	N°10		Junction pipe C90 1/2		
5	N°8		Pipe 1/2 R2 L=700		
6	N°10		Pipe 1/2 R1T L=390		
7	N°8		Female junction pipe		
8	N°9		Nipples		
9	N°9		Junction pipe C90		
10	N°9		Pipe 1/2 R1T L=290		
11	N°8		Nipples		
12	N°8		Pipe 1/2 R2 L=700		
13	N°9		Nipples		
14	N°9		Junction pipe C90		
15			T junction		
16	N°9		Pipe 1/2 R1T L=290		
17	N°6		Nipples		
18	N°6		Junction pipe C90 1/2		
19	N°6		Pipe 5/8 R1		
20	N°10		Nipples		
21	N°10		Female junction pipe		
22	N°10		Pipe 1/2 R1 L=390		
23	N°1		Junction pipe C90		
24	N°1		Junction pipe C90		
25	N°1		Nipples		
26	N°8		Pipe 1/2 R2 L=700		
27	N°8		Junction C90 1/2		
28	N°8		Nipples		
29	N°1		Pipe 3/4 R1 L=520		
30	N°1		Nipples		
31	N°1		Pipe 3/4 R1 L=520		
32	N°4		Pipe 1/4 R1 L=750		
33	N°4		Junction pipe C90 3/4		
34	N°4		Nipples		
35	N°6		Pipe 5/8 R1		
36	N°6		Nipples		
37	N°6		Female junction pipe 3/4		
38	N°3		Nipples		
39	N°3		Junction pipe C 45 3/4		
40	N°3		Pipe 3/4 R1 L=520		
41	N°7		Nipples		
42	N°7		Junction pipe C 90		
43	N°7		Pipe 5/8 R1 L=750		
44	N°4		Nipples		
45	N°21		Junction pipe C90		
46	N°21		Pipe 1/4 R1 L=750		
47	N°4		Junction pipe C90 3/4		
48	N°21		Nipples		
49	N°4		Pipe 3/4 R2 L=1200		
50	N°2		Pipe 3/4 R1 L=520		
51	N°2		Nipples		
52	N°2		Female junction pipe		
53	N°21		Nipples		
54	N°21		Female junction pipe		
55	N°21		Pipe 1/4 R1 L=750		



MINI STONE CRUSHER MF 450			HYDRAULIC SECTION_PULLEY_EXPLODED GRAPHIC		
			MF1.12.013		
Ref.	Denomination	Qty	DENOMINATION	Material	Note
1	N°4		Female junction pipe 1"		
2	N°4		Nipples		
3	N°4		Pipe 3/4 R2		
4	N°22		Nipples		
5	N°22		Junction C90		
6	N°22		Pipe 1/4 R1 L=300		
7	N°4		Nipples		
8	N°4		Pipe 3/4 R2		
9	N°4		Junction C90 3/4		

© Global Plant Ltd



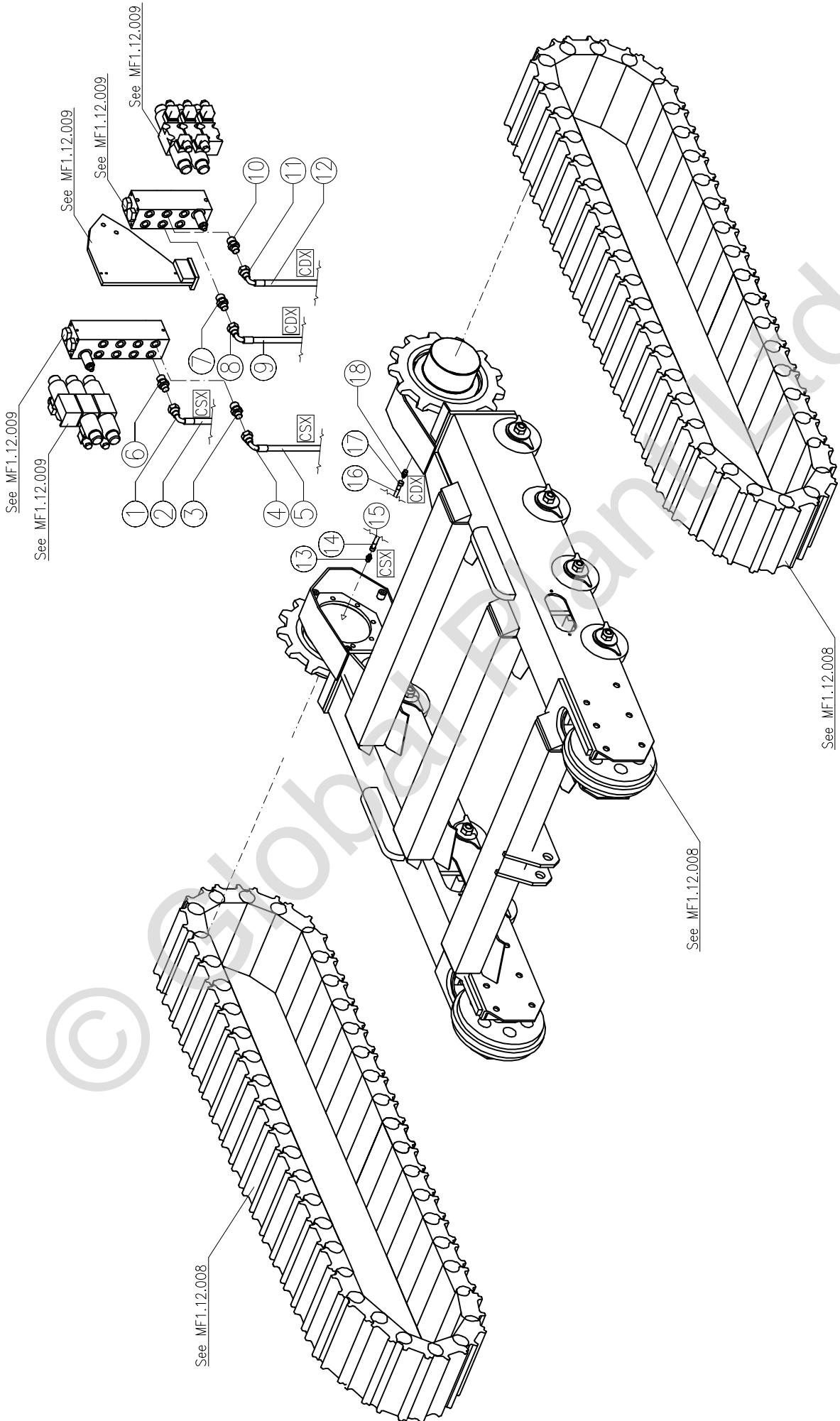
MINI STONE CRUSHER MF 450

HYDRAULIC SECTION_BLADE

MF1.12.014

MINI STONE CRUSHER MF 450			HYDRAULIC SECTION_BLADE_EXPLODED GRAPHIC		
Ref.	Denomination	Qty	DENOMINATION	Material	Note
1	N°15		Extension		
2	N°15		Nipples		
3	N°15		Junction pipe C90		
4	N°15		Pipe 1/4 R2 L=2450		
5	N°14		Extension		
6	N°14		Nipples		
7	N°14		Junction pipe C90		
8	N°14		Pipe 1/4 R2 L=2500		
9	N°15		Eye screw		
10	N°15		Round screw + Pipe 1/4 R2 L=2450		
11	N°14		Eye screw		
12	N°14		Round screw + Pipe 1/4 R2 L=2500		

© Global Plant Ltd



MINI STONE CRUSHER MF 450

HYDRAULIC SECTION_UNDERVAN

MF1.12.015

Questo disegno è esclusiva proprietà della QUIETI S.p.A. in quale ne vieta la diffusione, la riproduzione e la cessione a terzi.

MINI STONE CRUSHER MF 450			IN HYDRAULIC SECTION _EXPLODED GRAPHIC		
			MF1.12.015		
Ref.	Denomination	Q.ty	DENOMINATION	Material	Note
1	N°11		Junction pipe C90		
2	N°11		Pipe 3/8 R2 L=1600		
3	N°11		Nipples		
4	N°11		Junction pipe C90		
5	N°11		Pipe 3/8 R2 L=1600		
6	N°11		Nipples		
7	N°12		Nipples		
8	N°12		Junction pipe C90		
9	N°12		Pipe 3/8 R2 L=1800		
10	N°12		Nipples		
11	N°12		Junction pipe C90		
12	N°12		Pipe 3/8 R2 L=1800		
13	N°11		Nipples		
14	N°11		Female junction pipe		
15	N°11		Pipe 3/8 R2 L=1600		
16	N°12		Pipe 3/8 R2 L=1800		
17	N°12		Female junction pipe		
18	N°12		Nipples		