

ROTAIR S.p.A.

Compressori d'aria

Martelli idraulici

Minitransporter

Operating maintenance
Parts manual

RAMPICAR
R 900

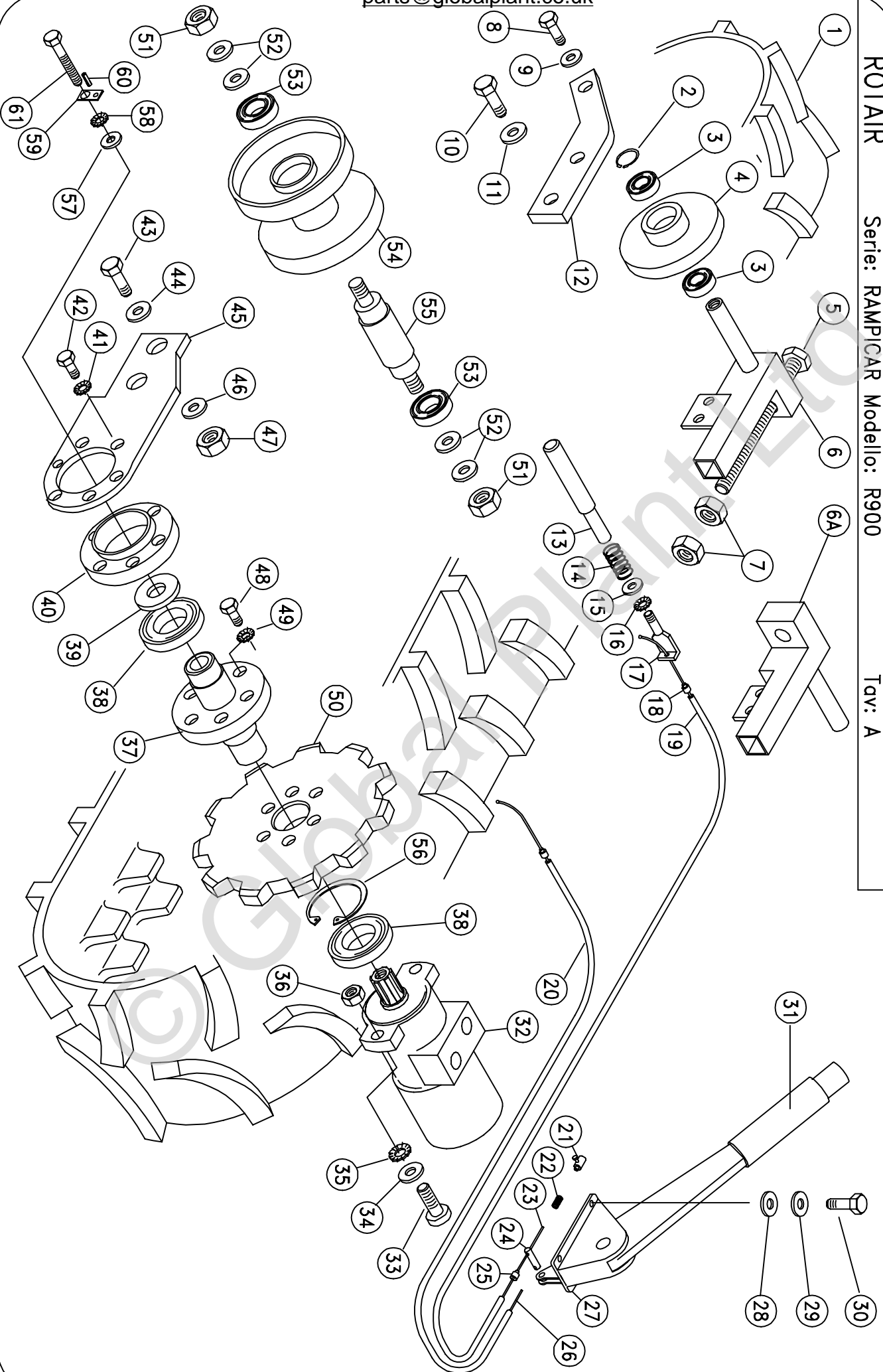
Via Bernezzo 67 – 12023 CARAGLIO (CN) –ITALIA
TLF: +39 0171 619676 – FAX: +39 0171 619677
E-MAIL: rotair@mtrade.com
Filiale Latino-Americana: ROTAIR CHILE S.A.



ROTAIR

Serie: RAMPICAR Modello: R900

Tav: A

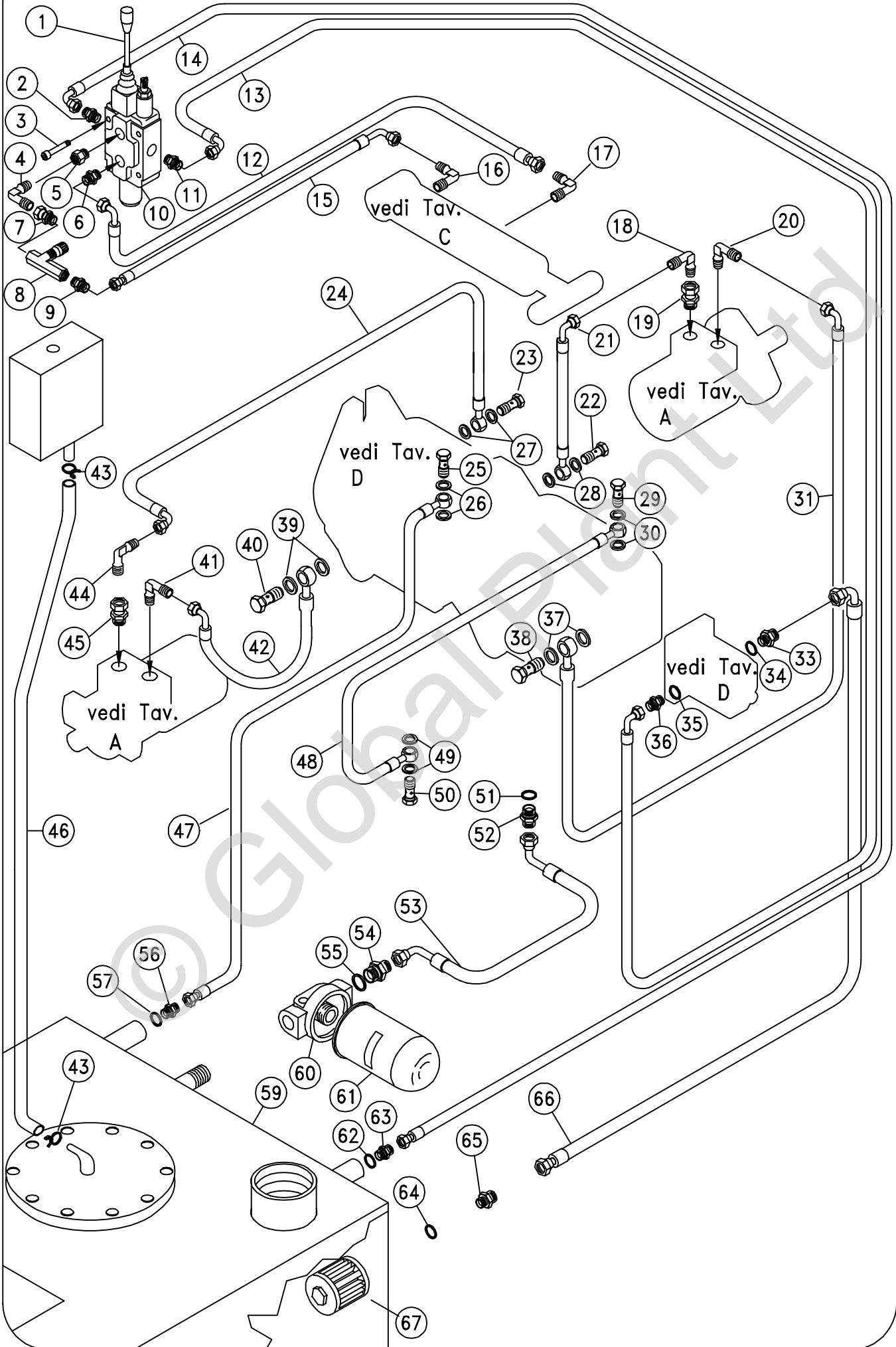


RAMPICAR R900 PARTS LIST**TAB. A**

POSITION	DESCRIPTION	CODE	QUANTITY'
1	TRACK	156-992-S	2
2	SEEGER	109-905-S	2
3	TRACK STRETCHER WHEEL BEARING	159-9105-S	4
4	TRACK STRETCHER WHEEL	123-903-S	2
5	M16x335 H.H. TRACK PULLING THREADED SCREW	132-335-S	2
6	RIGHT TRACK PULLING WHEEL SUPPORT	010-941-S	1
6A	LEFT TRACK PULLING WHEEL SUPPORT	010-942-S	1
7	M16 NUT	135-080-S	4
8	M10x25 H.H. SCREW	132-142-S	2
9	WASHER DIAM. 10x30	015-033-S	2
10	M12x20 H.H. SCREW	132-190-S	4
11	WASHER DIAM. 12	015-047-S	4
12	TRACK PULLING WHEEL SUPPORT BLADE	120-929-S	2
13	BRAKE PIN	018-902-S	2
14	BRAKE SPRING	043-905-S	2
15	FLASH WASHER DIAM. 8x18	015-030-S	2
16	GROOVED WASHER DIAM. 8	139-040-S	2
17	BRAKE TIE-ROD	112-900-S	2
18	STOP PIN	959-001-S	2
19	BRAKE SHEATH	008-9021-S	1
20	BRAKE SHEATH	008-9021-S	1
21	CLAMP	212-900-S	2
22	HANDBRAKE LEVER SPRING	043-906-S	2
23	HAND BRAKE CABLE	960-0121-S	1
24	CABLE-TIGHTNER PIN FOR HANDBRAKE LEVER	018-915-S	1
25	STOP PIN	959-001-S	2
26	HAND BRAKE CABLE	960-0121-S	1
27	HAND BRAKE LEVER	094-910-S	1
28	FLASH WASHER DIAM.8	015-030-S	4
29	ELASTIC WASHER DIAM. 8	139-040-S	4
30	M8x20 TCEI SCREW	132-101-S	4
31	RUBBER KNOB	185-905-S	1
32	ORBITAL ENGINE	165-930-S	2
33	M12x50 TCEI SCREW	133-237-S	4
34	WASHER DIAM. 12x24	015-047-S	4
35	GROOVED WASHER DIAM. 12	139-060-S	4
36	HIGH M12 NUT	135-060-S	4
37	TOOTHED WHEEL HUB	084-900-S	2

RAMPICAR R900 PARTS LIST**TAB. A**

POSITION	DESCRIPTION	CODE	QUANTITY'
38	BEARING	159-9015-S	4
39	WASHER FOR TOOTHED WHEEL HUB	015-905-S	2
40	TOOTHED WHEEL SUPPORT	010-940-S	2
41	ELASTIC WASHER DIAM. 6	139-030-S	12
42	M6x20 H.H. SCREW	132-063-S	12
43	M10x40 H.H. SCREW	132-145-S	4
44	FLASH WASHER DIAM.10x30	015-033-S	4
45	TOOTHED WHEEL SUPPORT BLADE	120-930-S	2
46	FLASH WASHER DIAM.10x30	015-033-S	4
47	M10 SELF-LOCKING NUT	137-050-S	4
48	M8x20 H.H. SCREW	132-101-S	12
49	WASHER DIAM. 8	015-030-S	12
50	TOOTHED WHEEL	123-908-S	2
51	M12 SELF-LOCKING NUT	137-060-S	16
52	WASHER DIAM. 12x24	015-034-S	32
53	BEARING	159-902-S	16
54	TRACK GUIDE ROLLER	123-917-S	8
55	TRACK GUIDE ROLLER SUPPORT PIN	018-921-S	8
56	SEEGER	109-066-S	2
57	FLASH WASHER DIAM.8	015-057-S	2
58	ELASTIC WASHER DIAM. 8	139-040-S	2
59			
60	ELASTIC PIN DIAM. 4x20	/	2
61	M8x100 H.H. SCREW	132-117-S	2



RAMPICAR R900 PARTS LIST**TAB. B**

POSITION	DESCRIPTION	CODE	QUANTITY'
1	DISTRIBUTOR LEVER	094-900-S	1
2	DOUBLE SCREW 3/8"	187-025-S	1
3	M8x50 TCEI SCREW	133-138-S	4
4	90° COUPLING 1/4" M+M	148-287-S	1
5	REDUCTION ELEMENT 3/8" – 1/4"	187-010-S	1
6	DOUBLE SCREW 3/8" – 1/4"	187-010-S	1
7	1/4" STRAIGHT ADAPTOR FITTING	148-003.2-S	1
8	1/4" CHOKE VALVE	033-910-S	1
9	DOUBLE SCREW 1/4"	187-005-S	1
10	1-LEVER DISTRIBUTOR	962-002-S	1
11	DOUBLE SCREW 3/8"	187-025-S	1
12	R2 PIPE 1/4" FD+F90° L=1450	065-910.2-S	1
13	R2 PIPE 3/8" F90°+F90° L=800	065-949.8-S	1
14	R2 PIPE 3/8" F90°+ FD L=600	065-949.6-S	1
15	R2 PIPE 1/4" FD+F90° L=1200	065-910-S	1
16	90° COUPLING 1/4" M+M	148-287-S	1
17	90° COUPLING 1/4" M+M	148-287-S	1
18	90° COUPLING 1/2" M+M	148-287.5-S	1
19	1/2" STRAIGHT ADAPTOR FITTING	148-004-S	1
20	90° COUPLING 1/2" M+M	148-287.5-S	1
21	R2 PIPE 3/8" 0(1/2") + F90° (1/2") L=1550	065-945.22-S	1
22	HOLLOW SCREW 1/2"	188-100-S	1
23	HOLLOW SCREW 1/2"	188-100-S	1
24	R2 PIPE 3/8" 0(1/2") + F90° (1/2") L=1550	065-945.22-S	1
25	HOLLOW SCREW 3/8"	188-080-S	1
26	COPPER WASHER 3/8"	015-010-S	2
27	COPPER WASHER 1/2"	015-012-S	2
28	COPPER WASHER 1/2"	015-012-S	2
29	HOLLOW SCREW 3/8"	188-080-S	1
30	COPPER WASHER 3/8"	015-010-S	2
31	R2 PIPE 3/8" 0(1/2") + F90° (1/2") L=1450	065-945.2-S	1
32			
33	DOUBLE SCREW 3/8" – 1/2"	187-035-S	1
34	COPPER WASHER 3/8"	015-010-S	1
35	COPPER WASHER 3/8"	015-010-S	1
36	DOUBLE SCREW 3/8"	187-025-S	1
37	COPPER WASHER 1/2"	015-012-S	2

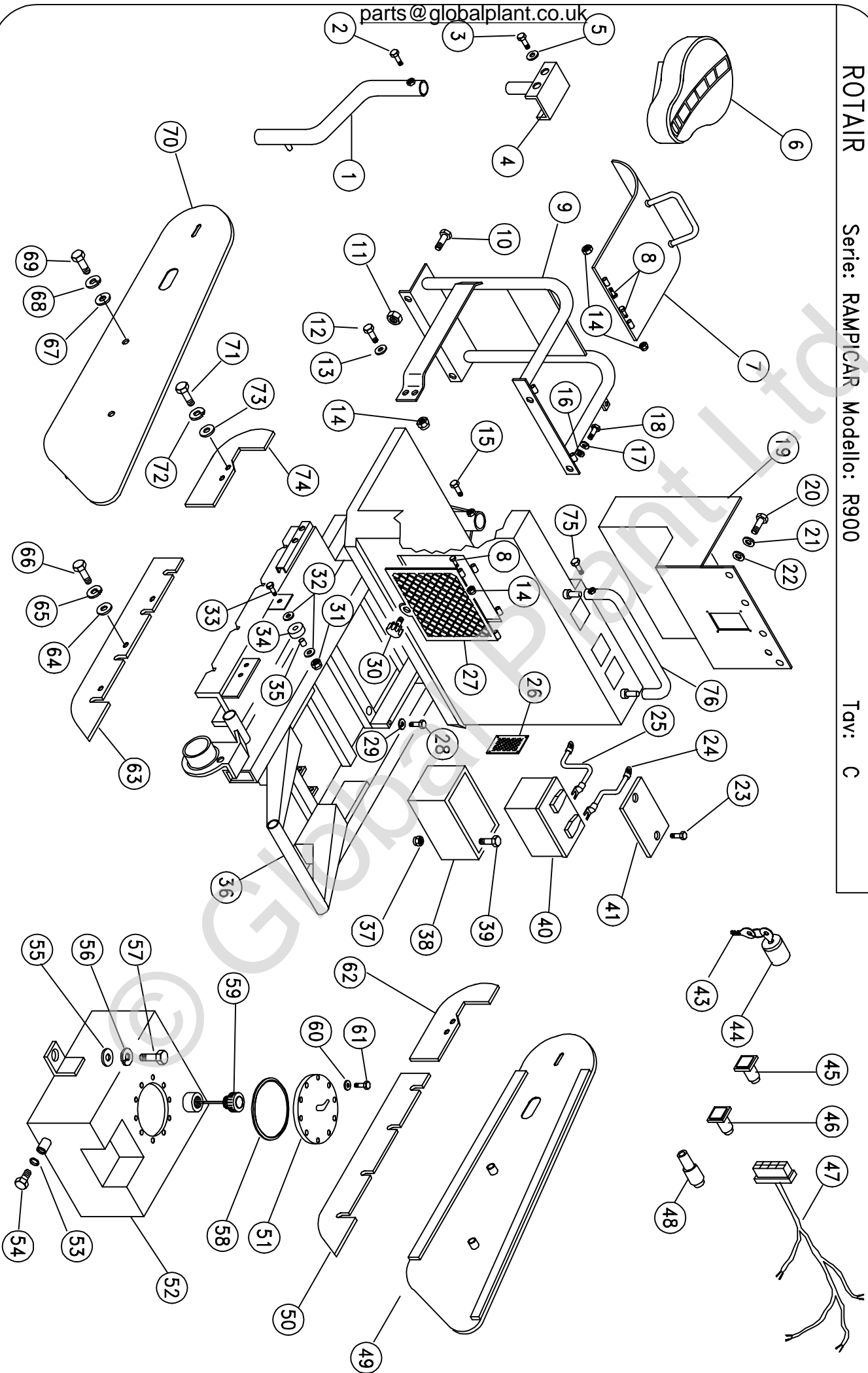
RAMPICAR R900 PARTS LIST**TAB. B**

POSITION	DESCRIPTION	CODE	QUANTITY'
38	HOLLOW SCREW 1/2"	188-100-S	1
39	COPPER WASHER 1/2"	015-012-S	2
40	HOLLOW SCREW 1/2"	188-100-S	1
41	90° COUPLING 1/2" M+M	148-287.5-S	1
42	R2 PIPE 3/8" O(1/2") + F90° (1/2") L=1550	065-945.22-S	1
43	STRIP DIAM. 15÷18	149-020-S	2
44	90° COUPLING 1/2" M+M	148-287.5-S	1
45	1/2" STRAIGHT ADAPTOR FITTING	148-004-S	1
46	BREATHER PIPE	089-105-S	1
47	R1 PIPE 3/8" FD+O L=500	065-006.1-S	1
48	R1 PIPE 3/8" O+O L=350	065-016.4-S	1
49	COPPER WASHER 3/8"	015-010-S	2
50	HOLLOW SCREW 3/8"	188-080-S	1
51	COPPER WASHER 1/2"	015-012-S	1
52	DOUBLE SCREW 1/2"	187-045-S	1
53	R1 PIPE 1/2" F90°+F90° L=510	065-662-S	1
54	DOUBLE SCREW 3/4" – 1/2"	187-350-S	1
55	COPPER WASHER 3/4"	015-015-S	1
56	DOUBLE SCREW 3/8"	187-025-S	1
57	COPPER WASHER 3/8"	015-010-S	1
58			
59	OIL TANK	201-909-S	1
60	OIL FILTER SUPPORT	C/ part. 61	1
61	OIL FILTER	099-903-S	1
62	COPPER WASHER 3/8"	015-010-S	1
63	DOUBLE SCREW 3/8"	187-025-S	1
64	COPPER WASHER 1/2"	015-012-S	1
65	DOUBLE SCREW 1/2"	187-045-S	1
66	R1 PIPE F90°+ FD 1/2" L=750	065-595-S	1
67	TILTER SUCTION OIL FILTER	099-901-S	1

ROTAIR

Serie: RAMPICAR Modello: R900

Tav: C

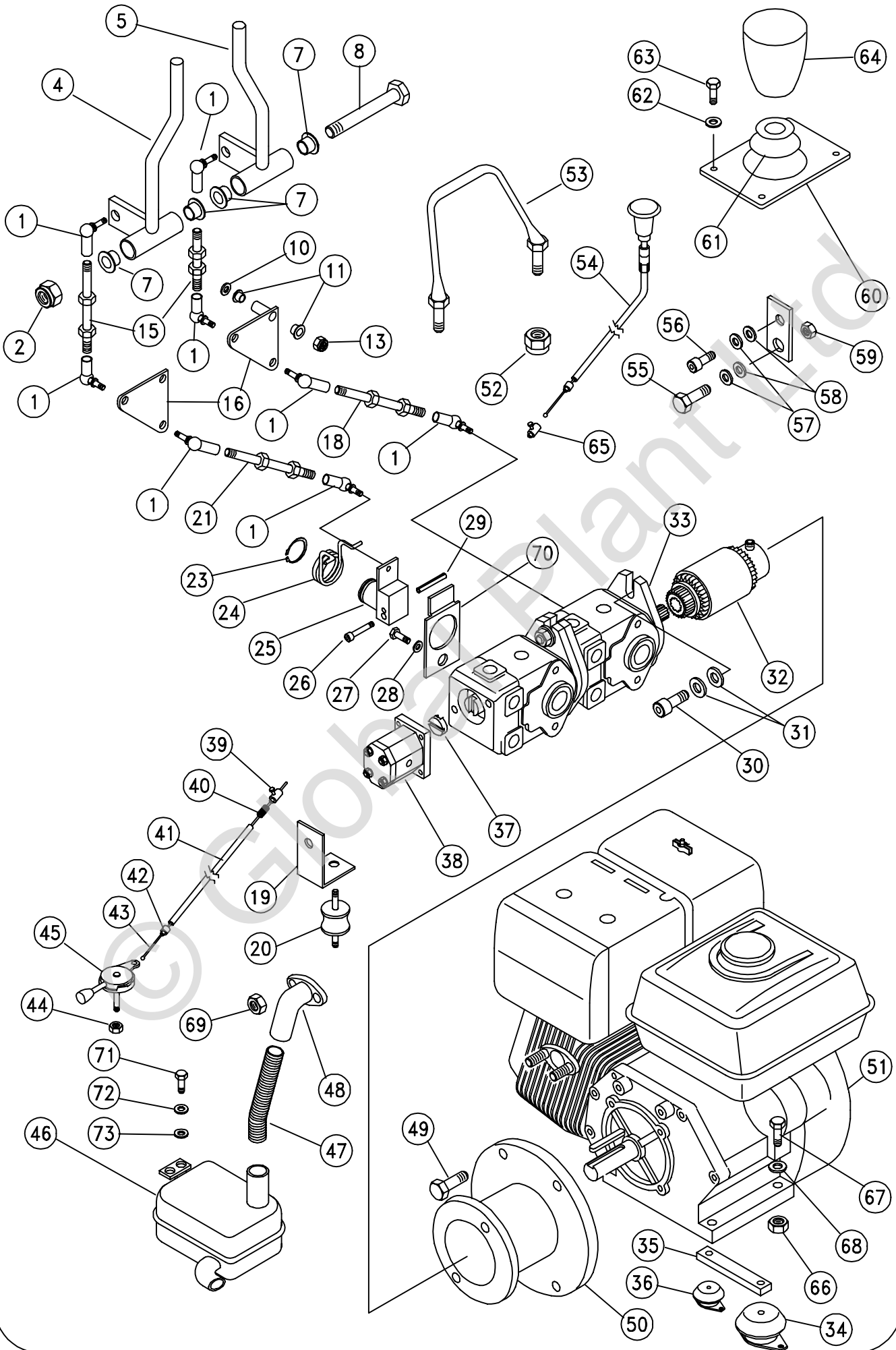


RAMPICAR R900 PARTS LIST**TAB. C**

POSITION	DESCRIPTION	CODE	QUANTITY'
1	SEAT TUBULAR FRAMEWORK	010-931-S	1
2	M8x16 H.H. SCREW	132-100-S	1
3	M6x10 H.H. SCREW	132-060-S	4
4	SEAT SUPPORT	010-932-S	1
5	WASHER DIAM. 6	015-027-S	4
6	SEAT	965-001-S	1
7	PROTECTIVE ENGINE BOX HONDA	005-907-S	1
7	PROTECTIVE ENGINE BOX	005-907-S	1
8	M8x65 TCEI SCREW	133-141-S	2
9	TUBULAR PROTECTIVE ENGINE BOX	005-908-S	1
10	M8x20 H.H. SCREW	132-101-S	2
11	M8 SELF-LOCKING NUT	137-040-S	2
12	M8x20 H.H. SCREW	132-101-S	2
13	WASHER DIAM. 8x16	015-030-S	2
14	M8 SELF-LOCKING NUT	137-040-S	2
15	M 10x20 H.H. SCREW	132-141-S	1
16	WASHER M8x16	015-030-S	2
17	ELASTIC WASHER DIAM. 8	139-040-S	2
18	M8x20 H.H. SCREW	132-101-S	2
19	HANDLEBAR PANEL	124-911-S	1
20	M6x16 H.H. SCREW	132-062-S	4
21	ELASTIC WASHER DIAM. 6	139-030-S	4
22	WASHER DIAM. 6x18	015-029-S	4
23	M6x20 H.H. SCREW	132-063-S	2
24	POSITIVE BATTERY CABLE	252-915-S	1
25	NEGATIVE BATTERY CABLE	252-915-S	1
26	LATERAL SCREENED PANEL	124-912-S	1
27	MOBILE SCREENED FLAP	110-915-S	1
28	M8x20 H.H. SCREW	132-101-S	1
29	FLASH WASHER DIAM. 8x16	015-030-S	1
30	KNOB	185-002-S	1
31	M12 SELF-LOCKING NUT	137-060-S	2
32	WASHER DIAM. 12x24	015-034-S	4
33	M12x55 H.H. SCREW	132-197-S	2
34	TEFLON WHEEL	123-927-S	2
35	TEFLON WHEEL FERRULE	223-845-S	2
36	HONDA ENGINE CHASSIS	038-940-S	1
36	YANMAR ENGINE CHASSIS	038-941-S	1

RAMPICAR R900 PARTS LIST**TAB. C**

37	M8 SELF-LOCKING NUT	137-040-S	2
38	BATTERY UNIT	029-908-S	1
39	M8x20 H.H. SCREW	132-101-S	2
40	BATTERY	174-115-S	1
41	BATTERY UNIT CLOSURE PANEL	124-922-S	1
42			
43	STARTER KEY	127-150-S	1
44	STARTER BLOCK	274-013-S	1
45	DYNAMO LIGHT	183-130-S	1
46	NEUTRAL LIGHT	183-105-S	1
47	HONDA ENGINE WIRING	224-700-S	1
47	YANMAR ENGINE WIRING	224-705-S	1
48	FUSE-HOLDER	270-030-S	1
49	EXTERNAL LEFT TRACK PROTECTIVE CASING	005-931-S	1
50	PROTECTIVE FRONT INTERNAL CASING	005-932-S	1
51	OIL TANK CLOSURE FLANGE	004-948-S	1
52	OIL TANK	201-909-S	1
53	COPPER WASHER 1/4"	015-007-S	1
54	1/4" IRON CAP	106-025-S	1
55	FLASH WASHER DIAM. 8x16	015-030-S	1
56	ELASTIC WASHER DIAM. 8	139-040-S	1
57	M8x20 TCEI SCREW	133-132-S	1
58	OR SEAL	023-291-S	1
59	CAP WITH ROD	106-902-S	1
60	FLASH WASHER DIAM. 6	015-027-S	10
61	M6x20 H.H. SCREW	132-063-S	10
62	PROTECTIVE REAR INTERNAL CASING	005-933-S	1
63	PROTECTIVE FRONT INTERNAL CASING	005-932-S	1
64	WASHER DIAM. 8x32	015-057-S	6
65	ELASTIC WASHER DIAM. 8	139-040-S	6
66	M8x20 H.H. SCREW	132-101-S	6
67	FLASH WASHER DIAM. 8x32	015-057-S	4
68	ELASTIC WASHER DIAM. 8	139-040-S	4
69	M8x40 H.H. SCREW	132-105-S	4
70	RIGHT TRACK EXTERNAL PROTECTIVE CASING	005-930-S	1
71	M6x20 H.H. SCREW	132-063-S	4
72	ELASTIC WASHER DIAM. 6	139-030-S	4
73	FLASH WASHER DIAM. 6x24	015-038-S	4
74	PROTECTIVE REAR INTERNAL CASING	005-933-S	1
75	M8x16 H.H. SCREW	132-100-S	1
76	ROLL BAR TUBULAR CASING	005-920-S	1



RAMPICAR R900 PARTS LIST**TAB. D**

POSITION	DESCRIPTION	CODE	QUANTITY'
1	ARTICULATED HEAD	961-005-S	8
2	M10 SELF-LOCKING NUT	137-050-S	1
4	LEFT CONTROL LEVER	094-922-S	1
5	RIGHT CONTROL LEVER	094-921-S	1
7	CONTROL LEVER FERRULE	223-805-S	4
8	M10x160 H.H. SCREW	/	1
10	WASHER DIAM. 10x20	015-032-S	2
11	CONTROL LEVER FERRULE	223-805-S	4
13	M10 SELF-LOCKING NUT	137-050-S	2
15	THREADED CONTROL ROD	102-910-S	2
16	CONTROL TRANSMISSION LEVER	094-923-S	2
17			
18	LONG CONTROL THREADED ROD	102-912-S	1
19	SILENT BLOCK (YANMAR) FIXTURE BLADE	/	1
20	SILENT BLOCK (YANMAR)	061-012-S	1
21	SHORT CONTROL THREADED ROD	102-911-S	1
22			
23	SEEGER	109-905-S	2
24	ZERO RETURN SPRING	043-900-S	2
25	A RETURN SPRING SUPPORT PLATE	208-501-S	2
26	M6x30 TCEI SCREW	133-094-S	2
27	M8x16 H.H. SCREW	132-100-S	2
28	FLASH WASHER DIAM. 8x18	015-030-S	2
29	ELASTIC PIN DIAM.5x40	143-276-S	4
30	M5x16 TCEI SCREW	133-052-S	2
31	FLASH WASHER DIAM. 6x24	015-038-S	4
32	JOINT (HONDA)	006-900-S	1
32	JOINT (YANMAR)	006-902-S	1
33	AXIAL HYDRAULIC PUMP	021-007-S	1
34	SILENT BLOCK (YANMAR)	061-002-S	1
35	FIXTURE BLADE SILENT BLOCK (YANMAR)	/	1
36	SILENT BLOCK (YANMAR)	061-030-S	4
37	GEAR PUMP TANDEM JOINT	006-901-S	1
38	BODY TILTING PUMP	021-008-S	1
39	ACCELERATOR TERMINAL KIT (HONDA)	044-901-S	1
40	ACCELERATOR SPRING	043-910-S	1
41	ACCELERATOR CABLE SHEATHING	008-9001-S	1
42	BUSHING FOR 5.2 SHEATH	959-002-S	2

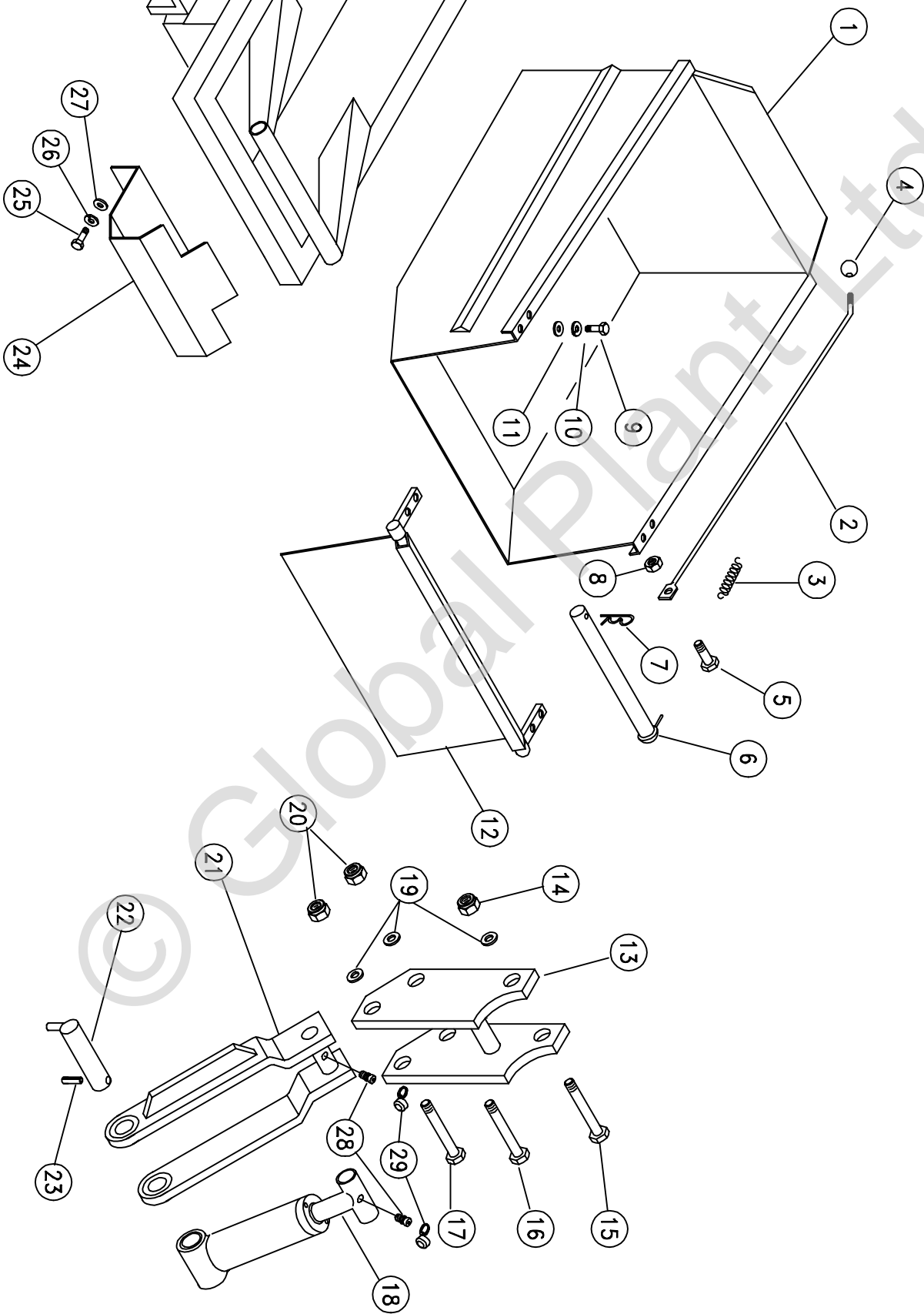
RAMPICAR R900 PARTS LIST**TAB. D**

POSITION	DESCRIPTION	CODE	QUANTITY'
43	ACCELERATOR CABLE	960-0151-S	1
44	M6 SELF-LOCKING NUT	137-030-S	1
45	ACCELERATOR THROTTLE	963-005-S	1
46	YANMAR SILENCER	042-910-S	1
46	HONDA SILENCER (WITH ENGINE)	/	1
47	AISI 304 STAINLESS STEEL HOSE (YANMAR)	090-040-S	1
48	EXHAUST GAS COLLECTOR (YANMAR)	119-900-S	1
49	UNC 30 (HONDA) SCREW	132-720-S	4
49 (YANMAR)	M8x25 H.H. SCREW	132-102-S	6
	FLASH WASHER DIAM. 8x16	015-030-S	6
	GROOVED WASHER DIAM. 8	139-040-S	6
50	ENGINE BOX (HONDA)	020-900-S	1
50	ENGINE BOX (YANMAR)	020-901-S	1
51	HONDA ENGINE GX 390 13CV AE	165-809-S	1
51	YANMAR ENGINE L100 10CV AE	165-984-S	1
52	M10 SELF-LOCKING NUT	137-050-S	1
53	SUPPORT HANDLE	209-901-S	1
54	STOP LEVER (YANMAR)	112-003-S	1
55	M10x40 H.H. SCREW (HONDA)	132-145-S	1
56	M10x30 TCEI SCREW (HONDA)	133-183-S	1
57	TOOTHED WASHER DIAM.10 (HONDA)	139-050-S	2
58	FLASH WASHER DIAM. 10x20 (HONDA)	015-032-S	2
59	M10 NUT (HONDA)	135-050-S	1
60	HANDLER BLOWER PLATE	208-515-S	2
61	HANDLER BLOWER	290-010-S	2
62	FLASH WASHER DIAM. 6x16	015-029-S	8
63	VITE M6x16	132-062-S	8
64	MANIPULATOR KNOB	185-901-S	2
65	ENGINE STOP CLAMP (YANMAR)	212-900-S	1
66	M8 NUT	135-040-S	4
67	M8x30 H.H. SCREW (YANMAR)	132-103-S	4
68	FLASH WASHER DIAM. 8x32 (YANMAR)	015-057-S	4
69	M12 NUT (WITH YANMAR ENGINE)	/	2
70	RETURN TO ZERO SPRING STOP PLATE	208-502-S	2
71	M8x25 H.H. SCREW	132-102-S	4
72	FLASH WASHER DIAM. 8x32	015-057-S	4
73	ELASTIC WASHER DIAM. 8	139-040-S	4

ROTAIR

Serie: RAMPICAR Modello: R900

Tav: E



RAMPICAR R900 PARTS LIST**TAB. E**

POSITION	DESCRIPTION	CODE	QUANTITY'
1	STANDARD DUMPER BUCKET	994-014-S	1
2	FLAP FRONT OPENING ROD	102-901-S	1
3	SPRING WITH EYELET	043-907-S	1
4	SPHERICAL KNOB	185-903-S	1
5	M8x20 H.H. SCREW	132-101-S	1
6	BODY TILTING PIN	018-909-S	1
7	SPRING SPLIT PIN DIAM. 3	104-908-S	1
8	M8 NUT	135-040-S	1
9	M10x20 H.H. SCREW	132-141-S	4
10	FLASH WASHER DIAM. 10	139-050-S	4
11	WASHER DIAM. 10x20	015-032-S	4
12	FRONT MOBILE FLAP	110-914-S	1
13	TILTER UPPER FORK	196-905-S	1
14	M16 SELF-LOCKING NUT	137-080-S	1
15	M16x120 H.H. SCREW	132-310-S	1
16	M16x120 H.H. SCREW	132-310-S	1
17	M16x120 H.H. SCREW	132-310-S	1
18	BODY TILTING CYLINDER	002-917-S	1
19			
20	M16 SELF-LOCKING NUT	137-080-S	2
21	LOWER TILTER FORK	196-906-S	1
22	BODY TILTING PIN	018-911-S	1
23	CYLINDRICAL PIN DIAM. 5x40	/	1
24	HYDRAULIC MOTOR PROTECTIVE CASING	005-909-S	1
25	M8x20 H.H. SCREW	132-101-S	3
26	ELASTIC WASHER DIAM. 8	139-040-S	3
27	FLASH WASHER DIAM. 8x16	015-030-S	3
28	LUBRICATOR	265-009-S	2
29	LUBRICATOR PROTECTION CAP	106-906-S	2